

December 2018



**NOBLE
MINERAL**
EXPLORATION INC.

Project 81

Drill Ready Geophysical Targets & Trends

Mahaffy Township

Timmins-Cochrane

Northern Ontario

Canada

TSX.V:NOB
FWB:NB7
OTC.PK:NLPXF

Certain statements contained in this presentation that are forward-looking in nature are based on the current beliefs and assumptions of the Company's management.

When used in this presentation, the words "may," "could," "should," "anticipate," "believe," "estimate," "expect," "intend," "plan," "predict," and similar expressions and their variants may be used to identify forward-looking statements. Such statements are valid only as of today, and we disclaim any obligation to update this information.

These statements are subject to known and unknown risks and uncertainties that may cause actual future experience and results to differ materially from the statements made. These statements are based on our current beliefs and expectations as to such future outcomes.

- Exploration activities were conducted on Noble's Project 81 prior to the adoption of National Instrument 43-101 ("NI 43-101"), as well as more recently when NI 43-101 was in force.
- Historical Exploration results that pre-date the adoption of NI 43-101 do not comply with current definitions prescribed by NI 43-101 or the *Canadian Institute of Mining*, and are disclosed only as indications of the presence of nickel, VMS, gold and other minerals. The historical models and data sets used to prepare these historical estimates are not available to Noble, nor have they been verified under current standards. In order to verify these resources as current estimates, Noble will have to conduct additional exploration work to verify the historic data. An independent qualified person for the purposes of NI 43-101 has not done sufficient work to classify these historical estimates as a current mineral resources or mineral reserves and Noble is not treating the historical estimates as a current mineral resources or mineral reserves.
- For information concerning the historical results of exploration activities conducted on Project 81, readers are encouraged to review "NI 43-101 Technical Report on the Project 81 Area", a technical report prepared for the Company by Ulrich Kretschmar, Phd, PGeo., that is available on the Company's website (<http://www.noblemineralexploration.com>) and under the Company's profile on SEDAR (www.sedar.com). This is the most recent technical report prepared in respect of the Property, in accordance with *National Instrument 43-101* (NI 43-101).
- Randy S.C. Singh, P.Geo. (ON), P.Eng (ON), Vice President, Exploration & Project Development for Noble Mineral Exploration Inc., is a "qualified person" as defined in NI 43-101, has reviewed and approved the disclosure of mineral exploration information contained in this presentation.

•Mahaffy Township Property comprises part of Project 81 is ~4,855 hectares contiguous staked mining claims located ~15-20 km north and west of the world class Kidd Creek Mine celebrating its 52nd year of production.

•Modern Airborne Electromagnetic and Magnetic Geophysical Surveys were completed in summer/fall of 2018

•2018 AirTEM Magnetic survey shows a strong magnetic body striking east-southeast for a distance of over 7 km and probably composed of a series of sills and/or layered intrusive units, some having a plunge to the east and steep southwesterly dip









•There are two main EM conductor trends which occur near but not within magnetic features. These are likely altered structures such as faults that could host disseminated sulphide containing gold. The magnetic units, while not directly conductive, could host disseminated nickel, copper, and/or PGE.

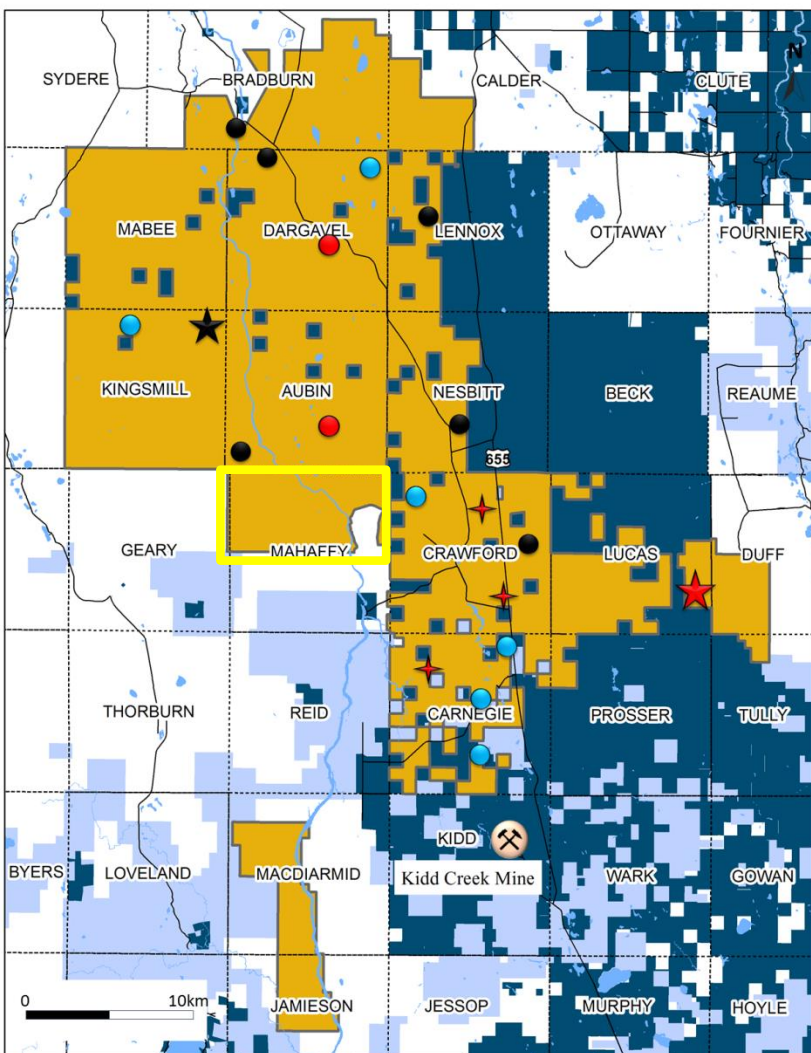
NOBLE PROJECT 81 79,000 HECTARES LAND PACKAGE DRILL READY TARGETS

**Project 81's Area
Play is a ~79,000 Ha
Land Package**

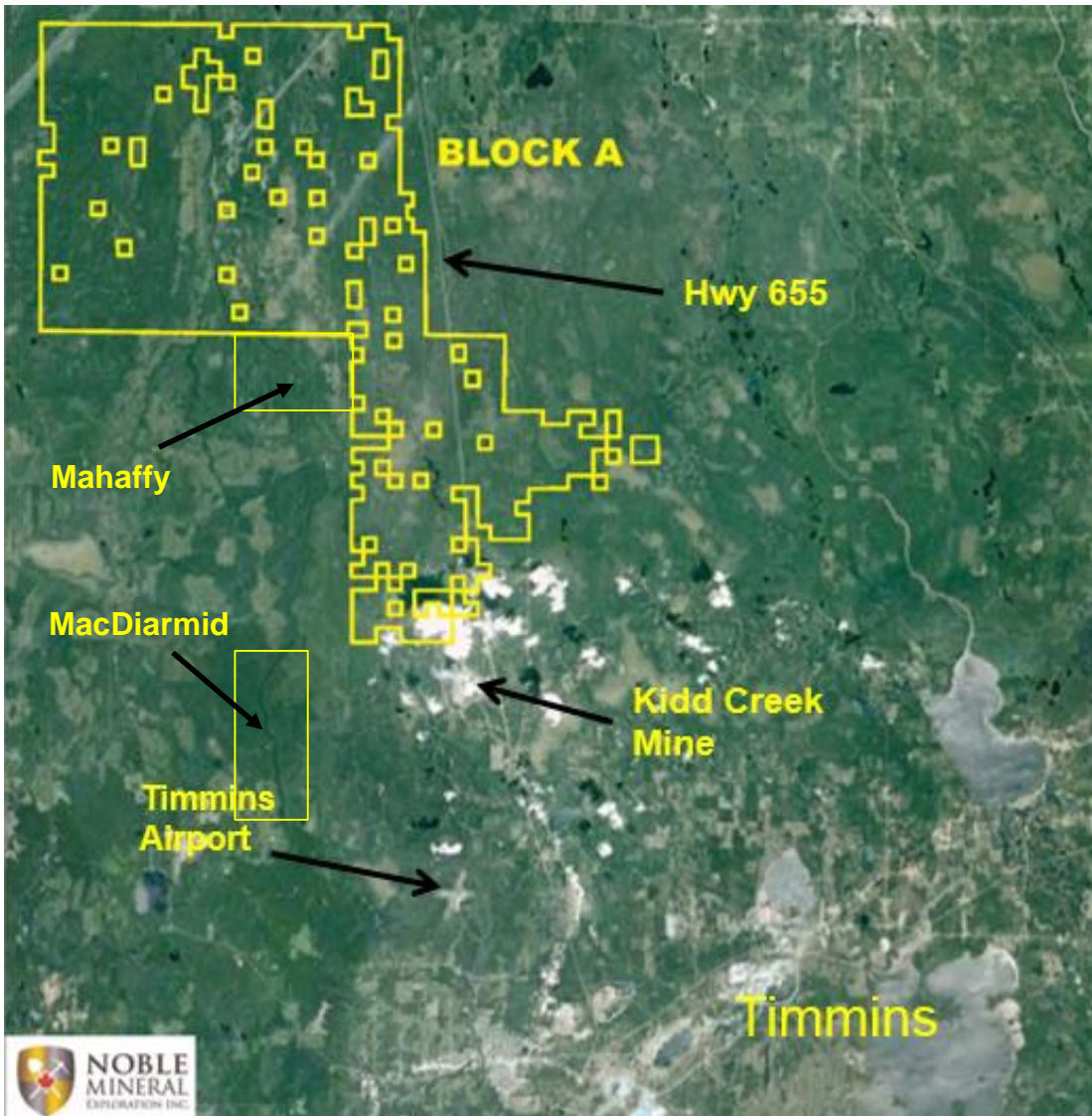
**Located
approximately 30 km
north of Timmins
world famous for
>75mm oz. of Au
production**

**2-3 km north of the
world class Kidd
Creek Mine
celebrating its 52nd
year of continuous
production having
produced >150mm
tonnes of ore**

-  Drill Indicated Ni Targets
-  Drill Indicated Au Targets
-  Gold Targets
-  VMS Targets
-  Lucas Au Zone
-  Kingsmill Ni-Co Deposit
-  Noble P81 Property Boundary
-  Other Claims
-  Other Patents

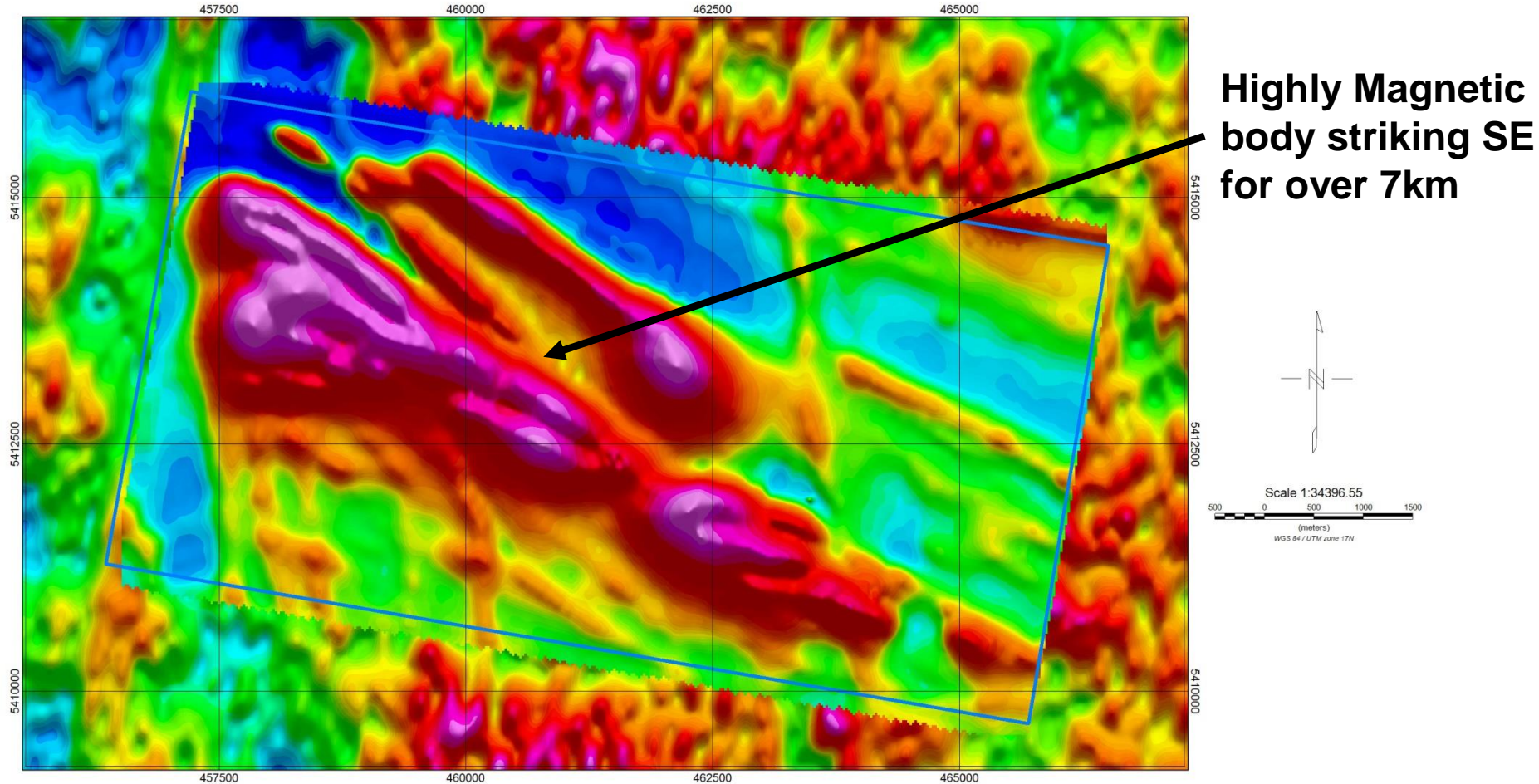


GOOGLE MAP SHOWING TIMMINS AREA INFRASTRUCTURE



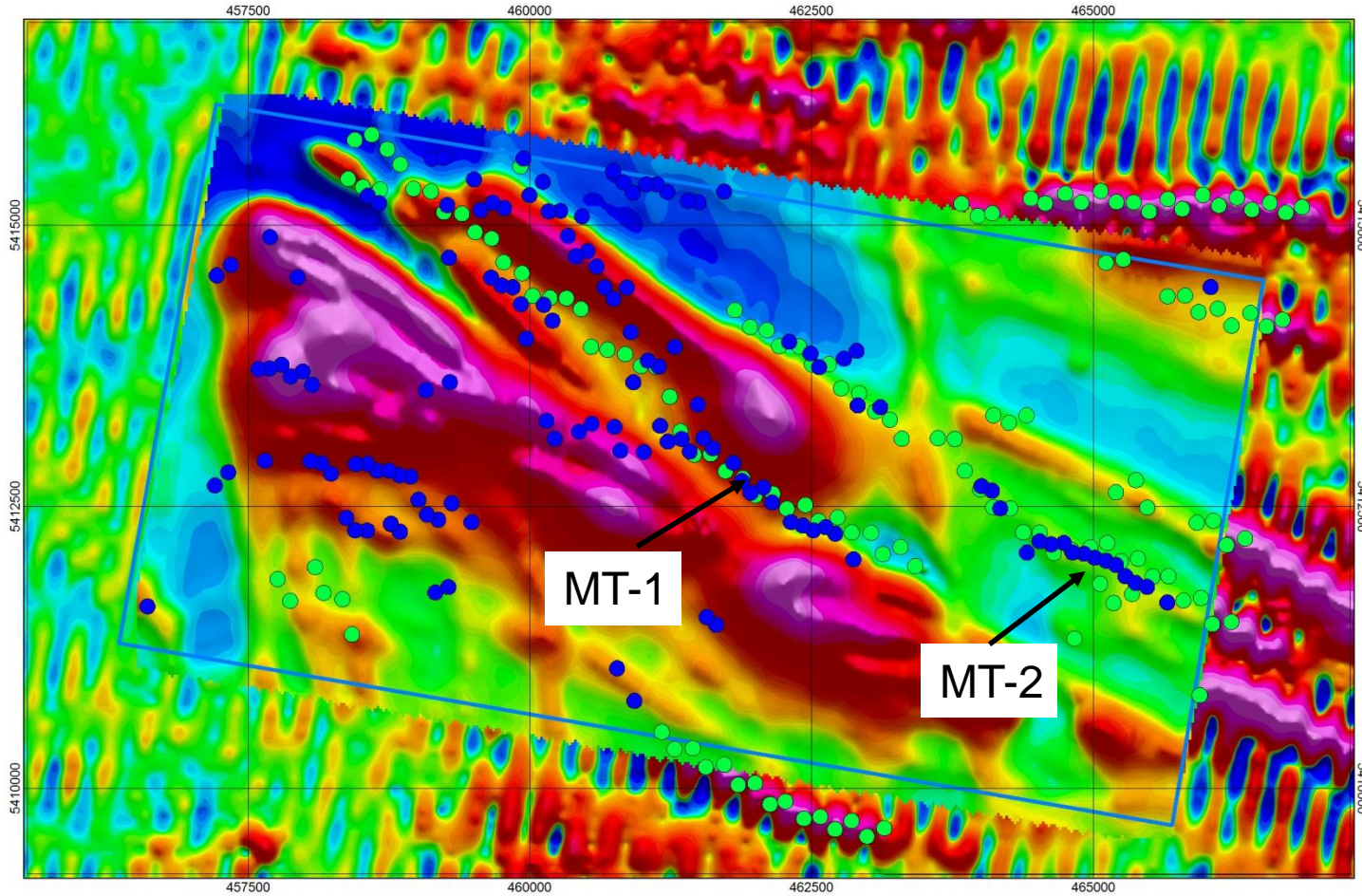
- Significant industry services, supplies and infrastructure in place in Timmins with access by paved Highway 655
- Ample access to power and water
- MoU signed with First Nations
- Drill programs proposed for fall/winter 2018-2019



MAHAFFY TOWNSHIP PROPERTY 2018 GEOPHYSICAL SURVEY SHOWING MAGNETICS FEATURE (TMI))

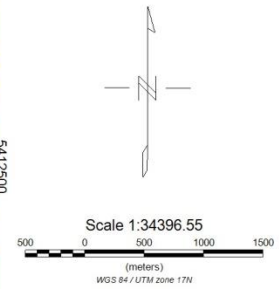


MAHAFFY TOWNSHIP PROPERTY 2018 & 2002 GEOPHYSICAL SURVEYS SHOWING EM TRENDS ON MAGNETIC MAP

TSX.V:NOB
FWB:NB7
OTC.PK:NLPXF

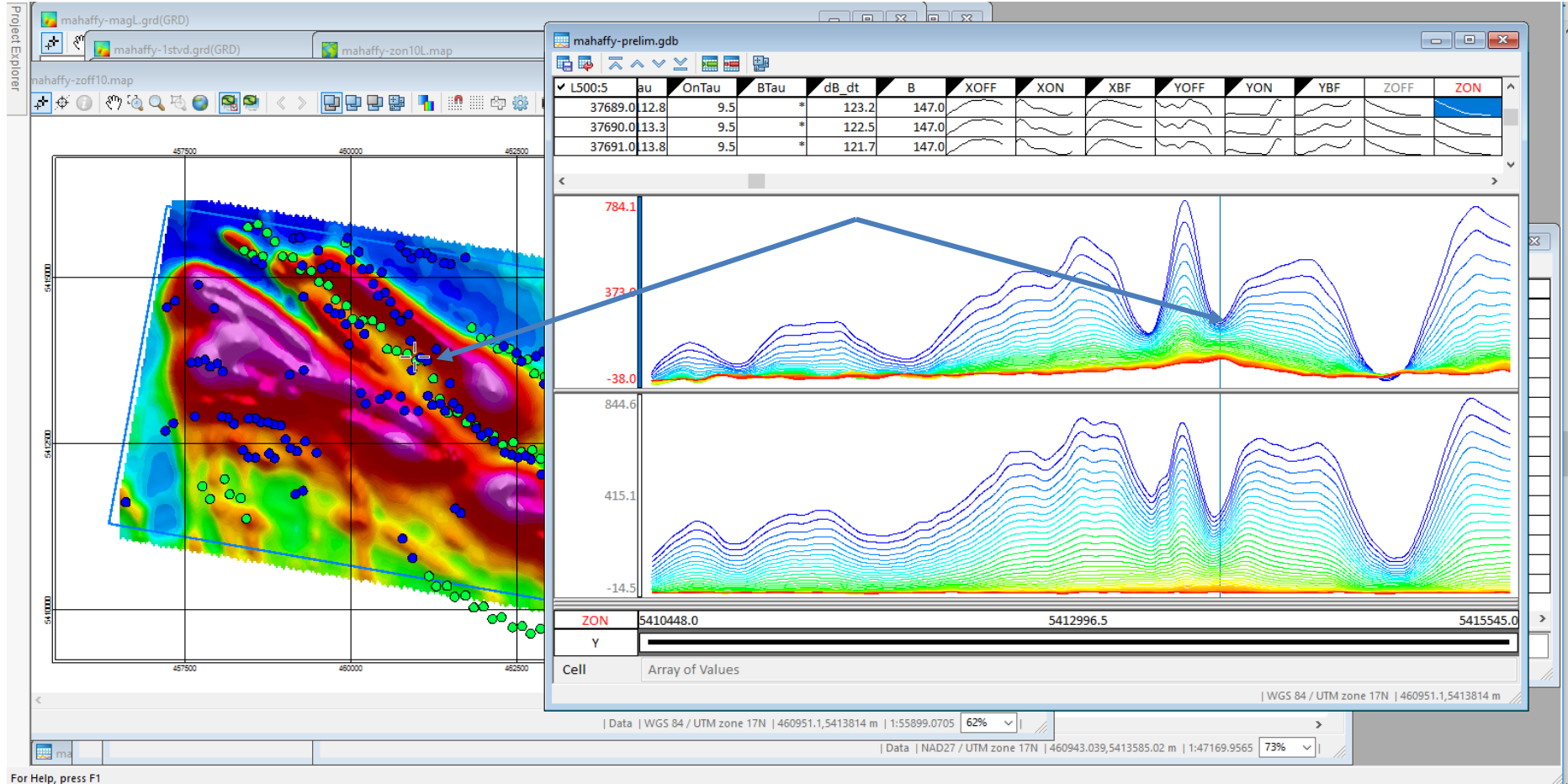


-  AirTEM-2018 Picks
-  MegaTEM 2002 Picks



MAHAFFY TOWNSHIP PROPERTY 2018 GEOPHYSICAL SURVEY SHOWING EM PICKS AND PROFILE

TSX.V:NOB
FWB:NB7
OTC.PK:NLPXF



For Help, press F1

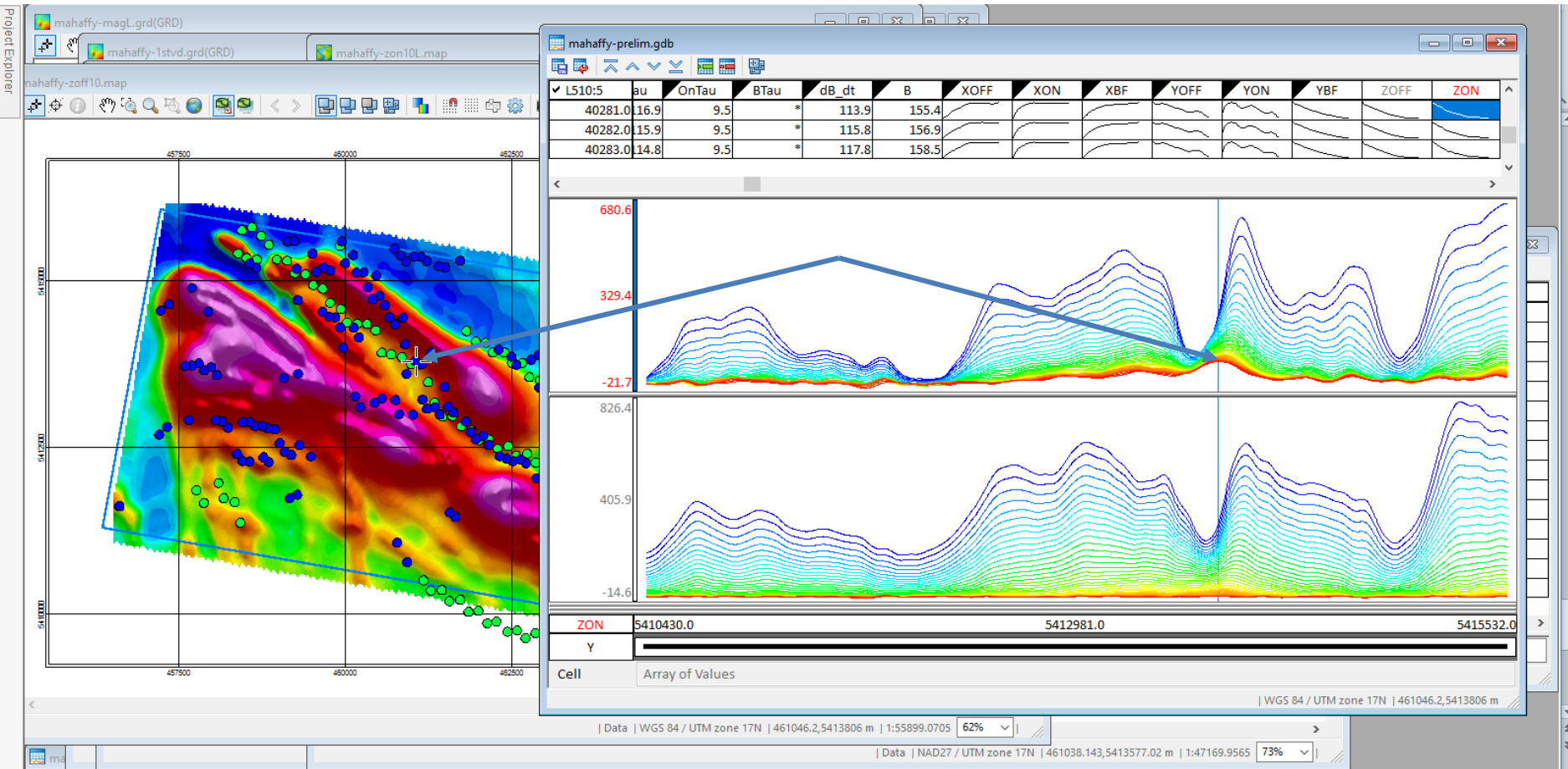
MAHAFFY TOWNSHIP PROPERTY

2018 GEOPHYSICAL SURVEY

SHOWING

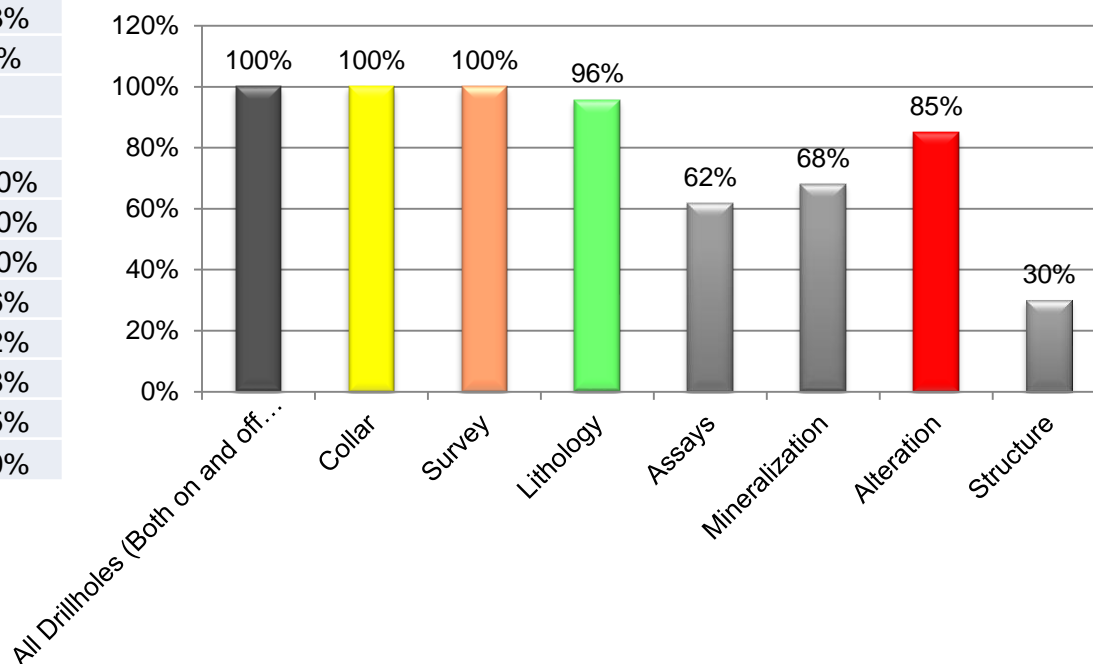
EM PICKS AND PROFILE

TSX.V:NOB
FWB:NB7
OTC.PK:NLPXF



DATABASE SUMMARY		
Total Drillholes (Both on and off Property)	47	100%
Diamond Drilling	22	47%
RC Drilling	25	53%
Unknown Drilling Type	0	0%
CONTAINED DATA		
All Drillholes (Both on and off Property)	47	100%
Collar	47	100%
Survey	47	100%
Lithology	45	96%
Assays	29	62%
Mineralization	32	68%
Alteration	40	85%
Structure	14	30%

Mahaffy Township Current Database for On and Off Property Drillholes



December 2018



**NOBLE
MINERAL**
EXPLORATION INC.

Drill Ready

Geophysical Targets & Trends

Mahaffy Township

Management:

**H. Vance White, President & Chief Executive Officer
Randy Singh PGeo(ON), PEng(ON), VP Exploration & Project Development
Corinna de Beer, Corporate Communications**

**2500 – 120 Adelaide St. W
Toronto, Ontario
Canada M5H 1T1**

**Phone: 416-214-2250 | Email: info@noblemineralexploration.com | Fax: 416-367-1954
www.noblemineralexploration.com**

**TSX.V:NOB
FWB:NB7
OTC.PK:NLPXF**