

December 2018



**NOBLE
MINERAL**
EXPLORATION INC.

Project 81

**Drill Ready
Geophysical Targets & Trends**

MacDiarmid Township

Timmins-Cochrane

Northern Ontario

Canada

TSX.V:NOB
FWB:NB7
OTC.PK:NLPXF

Certain statements contained in this presentation that are forward-looking in nature are based on the current beliefs and assumptions of the Company's management.

When used in this presentation, the words "may," "could," "should," "anticipate," "believe," "estimate," "expect," "intend," "plan," "predict," and similar expressions and their variants may be used to identify forward-looking statements. Such statements are valid only as of today, and we disclaim any obligation to update this information.

These statements are subject to known and unknown risks and uncertainties that may cause actual future experience and results to differ materially from the statements made. These statements are based on our current beliefs and expectations as to such future outcomes.

- Exploration activities were conducted on Noble's Project 81 prior to the adoption of National Instrument 43-101 ("NI 43-101"), as well as more recently when NI 43-101 was in force.
- Historical Exploration results that pre-date the adoption of NI 43-101 do not comply with current definitions prescribed by NI 43-101 or the *Canadian Institute of Mining*, and are disclosed only as indications of the presence of nickel, VMS, gold and other minerals. The historical models and data sets used to prepare these historical estimates are not available to Noble, nor have they been verified under current standards. In order to verify these resources as current estimates, Noble will have to conduct additional exploration work to verify the historic data. An independent qualified person for the purposes of NI 43-101 has not done sufficient work to classify these historical estimates as a current mineral resources or mineral reserves and Noble is not treating the historical estimates as a current mineral resources or mineral reserves.
- For information concerning the historical results of exploration activities conducted on Project 81, readers are encouraged to review "NI 43-101 Technical Report on the Project 81 Area", a technical report prepared for the Company by Ulrich Kretschmar, Phd, PGeo., that is available on the Company's website (<http://www.noblemineralexploration.com>) and under the Company's profile on SEDAR (www.sedar.com). This is the most recent technical report prepared in respect of the Property, in accordance with *National Instrument 43-101* (NI 43-101).
- Randy S.C. Singh, P.Geo. (ON), P.Eng (ON), Vice President, Exploration & Project Development for Noble Mineral Exploration Inc., is a "qualified person" as defined in NI 43-101, has reviewed and approved the disclosure of mineral exploration information contained in this presentation.











- MacDiarmid Township Property is ~3,681 hectares contiguous staked mining claims located ~10 km west of the world class Kidd Creek Mine celebrating its 52nd year of production.
- Modern Airborne ElectroMagnetic and Magnetic Geophysical Surveys were completed in summer/fall of 2018
- A major magnetic feature with well developed EM responses have been traced for over 2.5 km in strike and appears to be dipping steeply to the south.

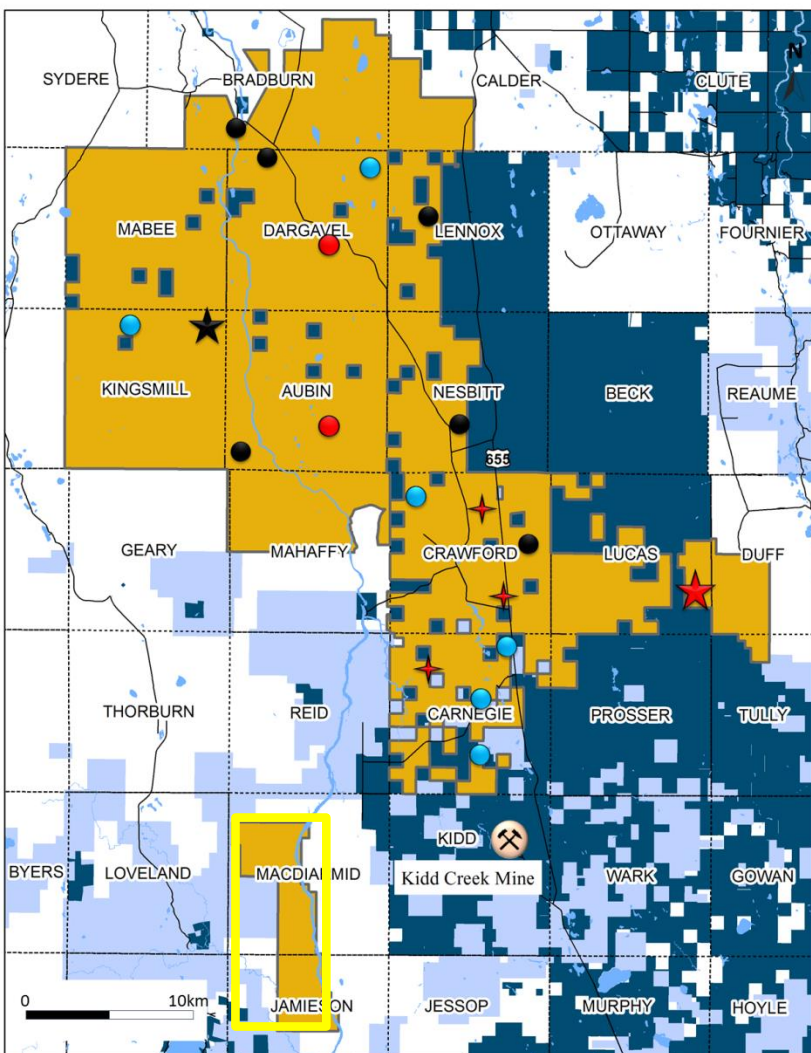
NOBLE PROJECT 81 79,000 HECTARES LAND PACKAGE DRILL READY TARGETS

**Project 81's Area
Play is a ~79,000 Ha
Land Package**

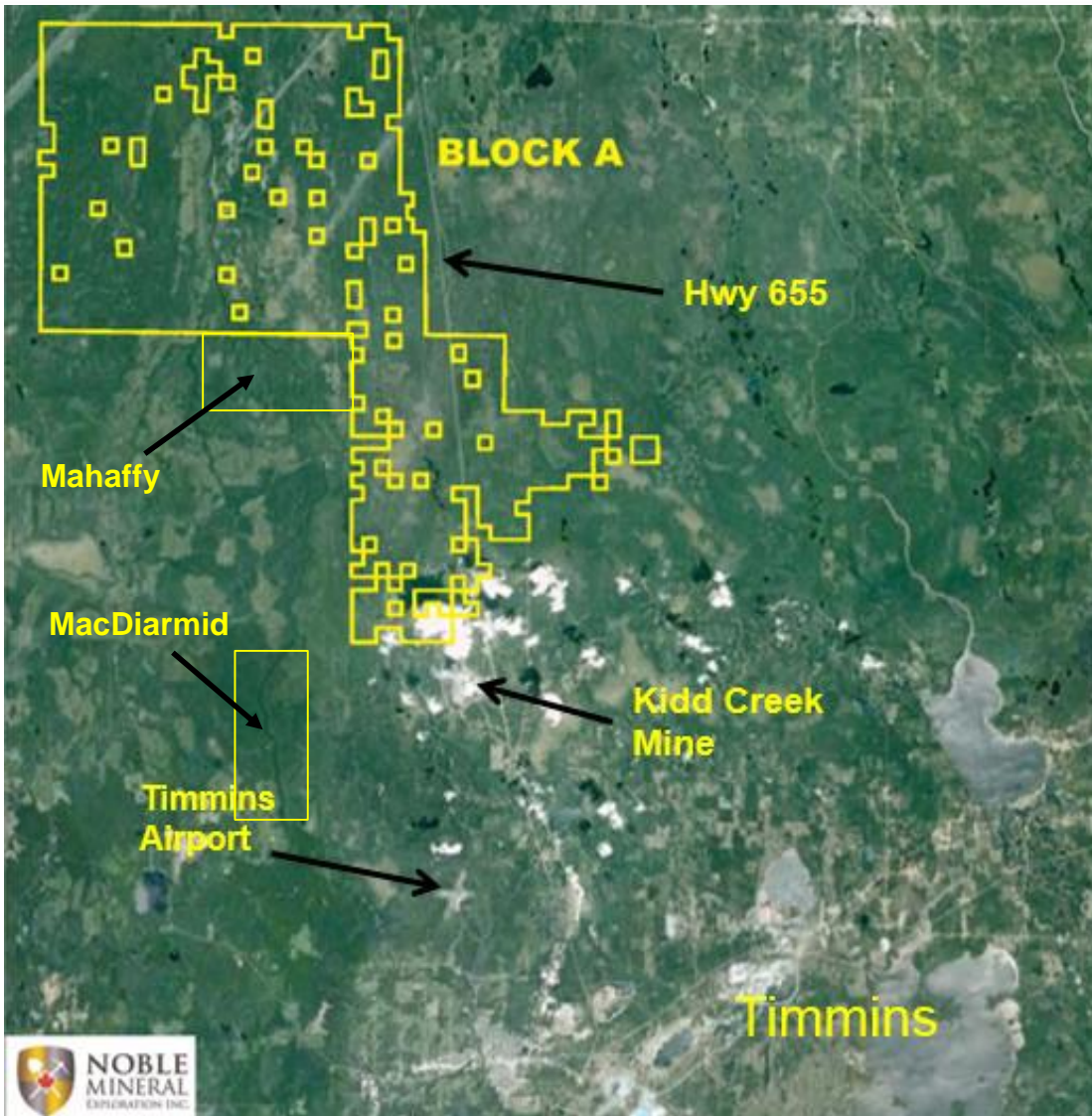
**Located
approximately 30 km
north of Timmins
world famous for
>75mm oz. of Au
production**

**2-3 km north of the
world class Kidd
Creek Mine
celebrating its 52nd
year of continuous
production having
produced >150mm
tonnes of ore**

-  Drill Indicated Ni Targets
-  Drill Indicated Au Targets
-  Gold Targets
-  VMS Targets
-  Lucas Au Zone
-  Kingsmill Ni-Co Deposit
-  Noble P81 Property Boundary
-  Other Claims
-  Other Patents



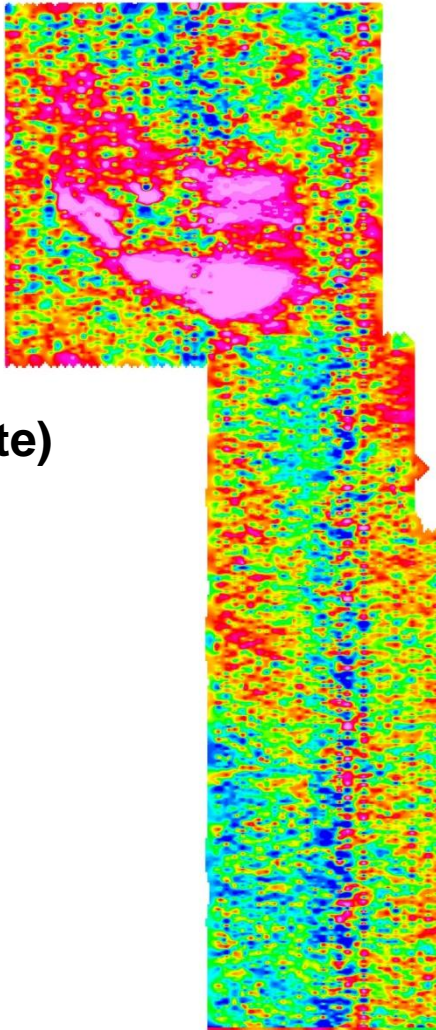
GOOGLE MAP SHOWING TIMMINS AREA INFRASTRUCTURE



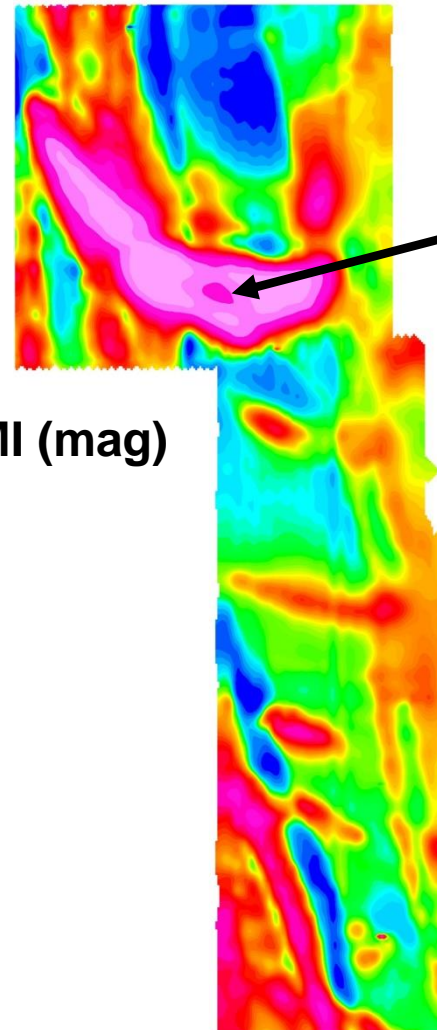
- Significant industry services, supplies and infrastructure in place in Timmins with access by paved Highway 655
- Ample access to power and water
- MoU signed with First Nations
- Drill programs proposed for fall/winter 2018-2019

showing
Discrete Magnetic Feature

Zoff-30 (Late)

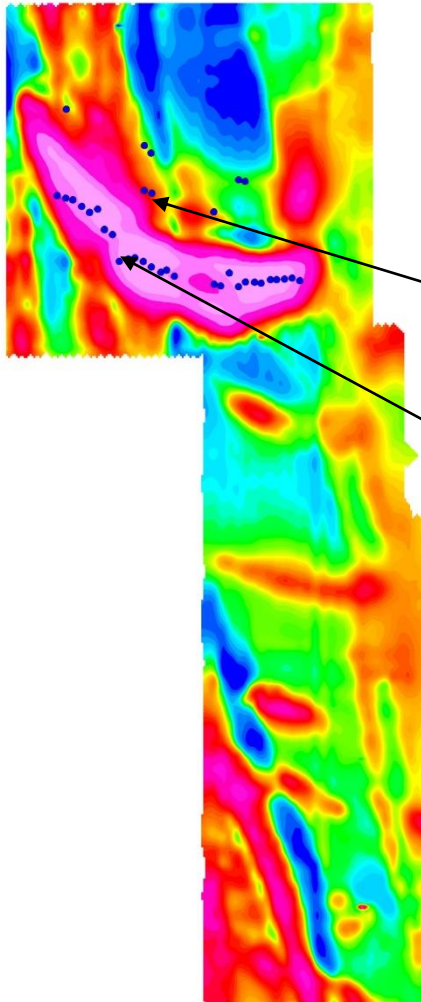


TMI (mag)

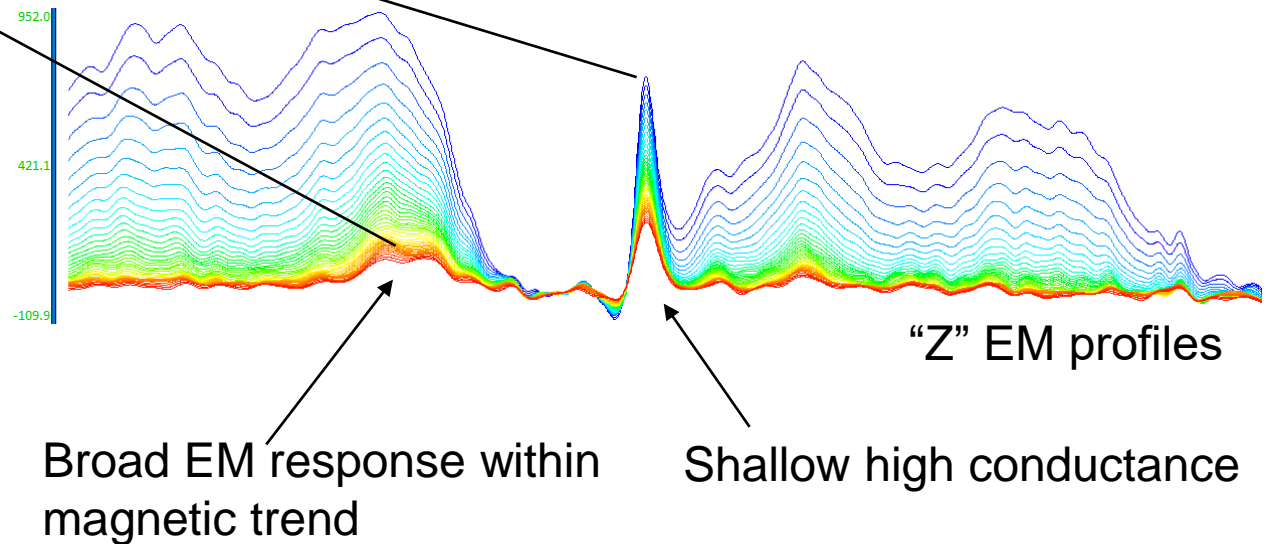


**Major highly
magnetic bedrock
conductor 2.5km
strike length**

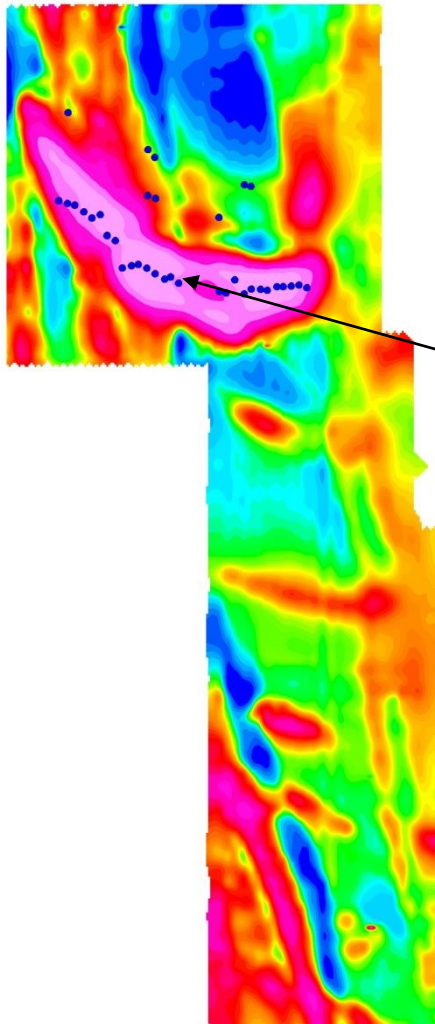
MacDIARMID TOWNSHIP PROPERTY 2018 GEOPHYSICAL SURVEY SHOWING EM TREND ON MAGNETIC FEATURE



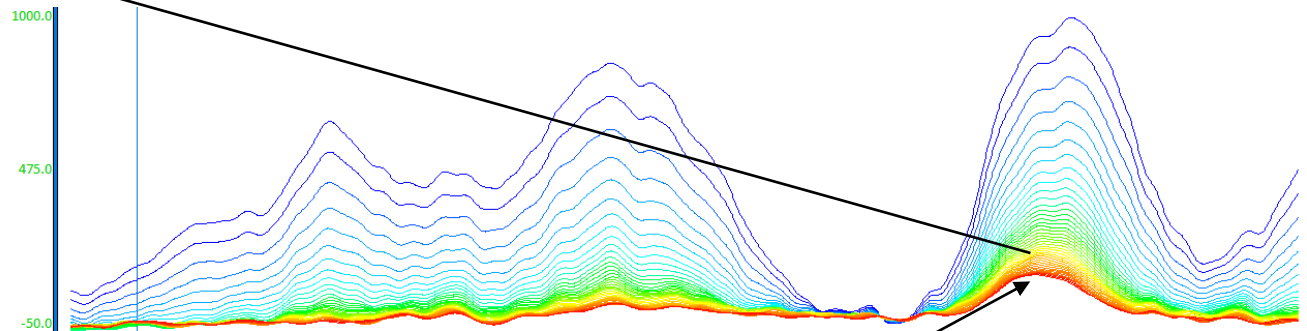
- Major magnetic feature with well developed EM responses.
- Main trend - 2.5 km strike length



MacDIARMID TOWNSHIP PROPERTY 2018 GEOPHYSICAL SURVEY SHOWING EM TREND ON MAGNETIC FEATURE



- Major magnetic feature with well developed EM responses.
- Main trend - 2.5 km strike length



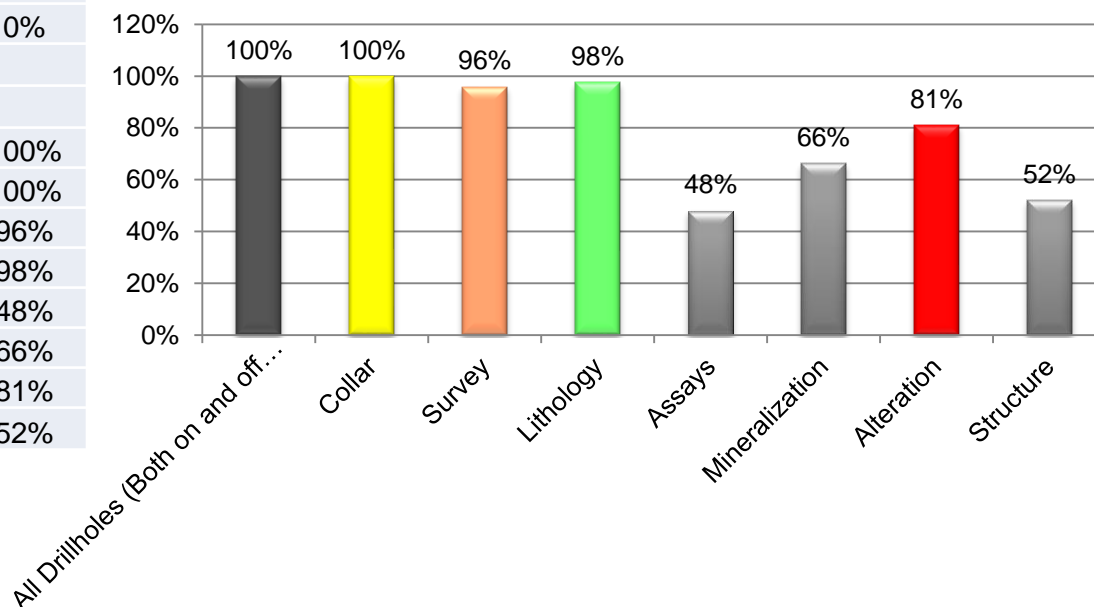
“Z” EM profiles

Well developed broad EM response
within magnetic trend

DATABASE SUMMARY		
Total Drillholes (Both on and off Property)	121	100%
Diamond Drilling	121	100%
RC Drilling	0	0%
Unknown Drilling Type	0	0%

CONTAINED DATA		
All Drillholes (Both on and off Property)	121	100%
Collar	121	100%
Survey	116	96%
Lithology	118	98%
Assays	58	48%
Mineralization	80	66%
Alteration	98	81%
Structure	63	52%

MacDiarmid_Jamieson Current Database for On and Off Property Drillholes



December 2018



**NOBLE
MINERAL**
EXPLORATION INC.

Drill Ready

Geophysical Targets & Trends

MacDiarmid Township

Management:

**H. Vance White, President & Chief Executive Officer
Randy Singh PGeo(ON), PEng(ON), VP Exploration & Project Development
Corinna de Beer, Corporate Communications**

**2500 – 120 Adelaide St. W
Toronto, Ontario
Canada M5H 1T1**

**Phone: 416-214-2250 | Email: info@noblemineralexploration.com | Fax: 416-367-1954
www.noblemineralexploration.com**

**TSX.V:NOB
FWB:NB7
OTC.PK:NLPXF**