

# FACT SHEET

UPDATED JULY 9, 2021



*A Canadian junior natural resource company listed on the TSX Venture Exchange, the Frankfurt Stock Exchange and the OTC: Pink Sheets. Noble Mineral Exploration Inc. holds in excess of 83,000 hectares of mineral rights in the Timmins-Cochrane area of Northern Ontario, upon which it plans to generate joint venture exploration programs.*

## FLAGSHIP PROPERTY - PROJECT 81

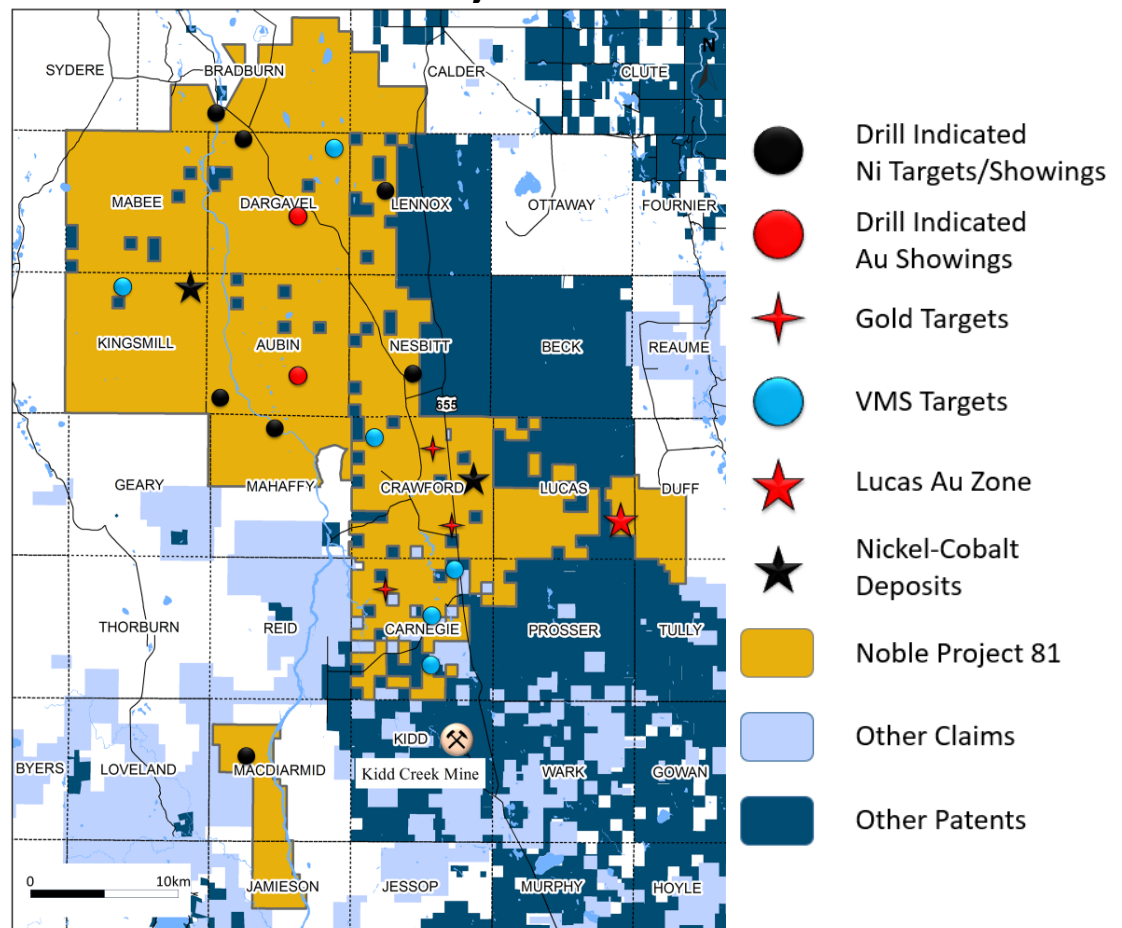
### Gold - Ni-Co-PGM – VMS Potential Timmins Area, Northern Ontario, Canada

- The property currently consists of mineral rights totaling approximately 72,034 ha (~178,000 ac) of land covering 14 townships immediately north of the Kidd Creek Mine Complex plus an additional 11,992 ha (~29,633 ac) in 4 townships near Timmins, Ontario.
- Memoranda of Understanding have been signed with The First Nations.

### Mineral Exploration Potential

- This is a very large under-explored patented mineral rights and staked claims property with boundaries within 3km of the Kidd Creek Mine, 30km of the major Porcupine-Destor Main Break and within 25km of the City of Timmins
- Significant infrastructure available with a major paved highway (Hwy 655) running up the middle of the Property, 2 hydro transmission lines crosscut the property and numerous well-maintained gravel roads to service hydro dams and transmission lines adjacent to the property on the Matagami River
- Over 2000 geophysical anomalies have been identified over the entire property area by Heliborne EM & MAG Surveys which were flown in 2011, 2017 and 2018
- Airborne High-Definition Gravity Gradiometer Survey (HD-AGG) flown in 2018 over Crawford and Carnegie Twps
- Artificial Intelligence Study over Carnegie and Crawford Twps
- In excess of 237 drill holes during the '60's, '70's and '80's by previous operators
- Noble & Partners have drilled two (2) Nickel-Cobalt-PGM Deposits in Kingsmill Twp & Crawford Twp.
- Crawford Twp deposit spun out to Canada Nickel, with Canada Nickel optioning 5 additional Ni-Co-PGM targets
- Additional Potential for Au, VMS-Ni/PGM, Chromite, Cu and Pb-Zn deposits

### Project Generator



#### Exchange: Symbol

TSX.V: **NOB**

FWB: **NB7**

OTCQB: **NLPXF**

As of close July 8, 2021

Cdn. \$0.12

#### 52 week Hi-Lo

Cdn. \$0.21 - \$0.06

#### Shares Outstanding

180.4 million

#### Warrants O/S

49.6 million

#### Options O/S

4.0 million

#### Fully Diluted

Approx. 235 million

#### Market Capitalization

~ \$21.6 million

#### Year End

August 31

#### Financial Reports:

[www.sedar.com](http://www.sedar.com)

#### Transfer Agent:

TMX Equity Transfer Services

#### Investor Relations

[ir@nobleminealexploration.com](mailto:ir@nobleminealexploration.com)

[www.nobleminealexploration.com](http://www.nobleminealexploration.com)

#### Qualified Person:

All projects are conducted under the Supervision of Noble's Exploration Manager Wayne Holmstead PGeo

The Company's Qualified Persons under the meaning of NI 43-101 are Michael Newbury P.Eng and Randy Singh PGeo, PEng

## OTHER PROJECTS

**TSX.V: NOB**  
**FWB: NB7**  
**OTCQB: NLPXF**

**Head Office:**

120 Adelaide Street W.  
 Suite 2500  
 Toronto, ON M5H 1T1  
 Ph: 416-214-2250  
 Fx: 416-367-1054

**eMail:**

info@noblemineralexploration.com

**Website:**

www.noblemineralexploration.com

**Twitter:** @NobleMineral

**LinkedIn:** Noble Mineral  
 Exploration

**Investor Relations**

Ph: 416-214-2250

ir@noblemineralexploration.com

**Executive Team:**

H. Vance White  
*President, CEO &  
 Director*

Wayne Holmstead P.Geo  
*Exploration Manager*

Robert Suttie  
*Chief Financial Officer*

Mike Newbury P.Eng  
*Director*

Birks Bovaird  
*Director*

Yvan Champagne  
*Director*

Dr. Samuel Peralta  
*Director*

Stephen Balch P.Geo  
*Special Advisor/Consultant*

Denis Frawley  
*Corporate Secretary*

**Investor Relations &  
 Corp. Communications**

H. Vance White  
 Corinna de Beer

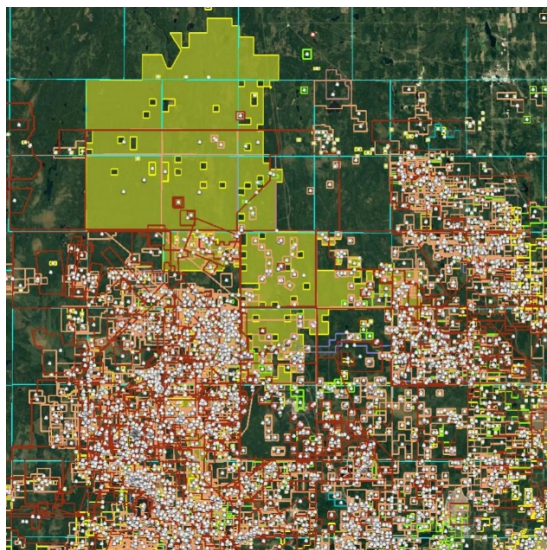
ir@noblemineralexploration.com

**RECENT CORPORATE ACTIVITIES**

- In 2020 Noble spun out a pure play Nickel-Cobalt-PGM Company - Canada Nickel Company (CNC.V) and transferred 100% interest in the Crawford Nickel-Cobalt Project into Canada Nickel Company;
- The Company assigned a 2% NSR Royalty interest on all the patented lands to Franco-Nevada Corporation (FNV.TSX) and retains a 2% NSR on all staked mining claims;
- The Company reacquired the Holdsworth Gold property from MacDonald Mines;
- The Company has agreed to option or acquire 307 mining claims and has staked 256 mining claims in Mann, Hanna, Duff and Reaume Twps in the Timmins area covering a total of ~11,992 ha;
- The Company recently acquired the Buckingham Graphite property, the Cere-Villebon Ni/Co/Pgm property and the Laverlochere Ni/Cu/Co/Au/Pgm property all of which are in Quebec

**RECENT EXPLORATION ACTIVITIES**

- The Company has also completed a detailed compilation of all historic and current data on Project 81
- The Company carried out a prioritization study of drill ready targets on Project 81 identifying a number of Nickel/Cobalt, Gold and VMS targets
- The Company is in active negotiations on a number of additional Option/Joint Ventures on specific lands within Project 81
- The company completed a survey of old drill holes collars on the Lucas Gold Project, which better oriented the known Gold mineralized structure
- The Company completed a 3000m diamond drill program on the Lucas Gold Project in 2018
- The Company completed a high resolution Airborne Mag survey, Mag Inversion Study followed up by a 1000m drill program in Dargavel Twp



**Map depicting the lack of exploration activities within Project 81**

**MacDonald Mines Shareholding**

- 3,684,000 shares of MacDonald Mines Exploration Ltd;

**Spruce Ridge Resources Shareholding**

- 8,000,000 shares and 10,000,000 5yr wts exercisable at \$0.05per wt

**Canada Nickel Company Shareholding**

- 2,200,000 shares

*The material contained in this publication is for information purposes only and does not constitute an offer to sell or buy the security. The material is not all-inclusive*