

December 2018



**NOBLE
MINERAL**
EXPLORATION INC.

Project 81

Kingsmill Nickel-Cobalt Deposit

Kingsmill Township

Timmins-Cochrane

Northern Ontario

Canada

TSX.V:NOB
FWB:NB7
OTC.PK:NLPXF

Certain statements contained in this presentation that are forward-looking in nature are based on the current beliefs and assumptions of the Company's management.

When used in this presentation, the words "may," "could," "should," "anticipate," "believe," "estimate," "expect," "intend," "plan," "predict," and similar expressions and their variants may be used to identify forward-looking statements. Such statements are valid only as of today, and we disclaim any obligation to update this information.

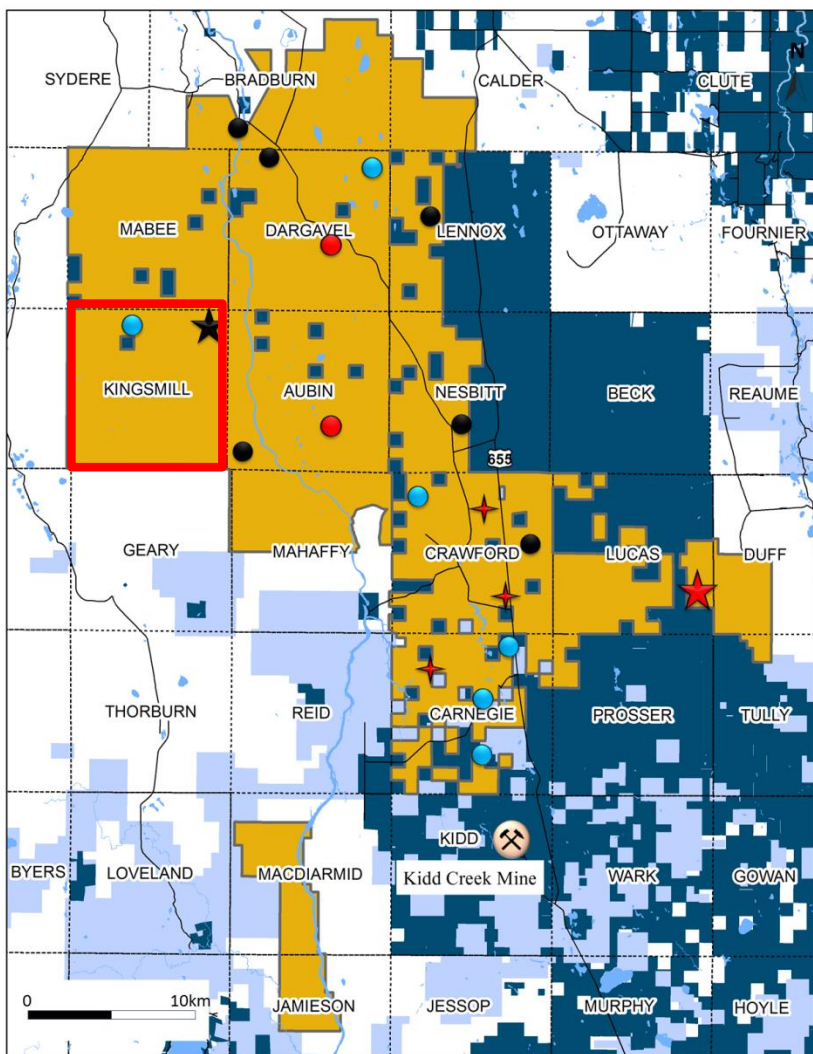
These statements are subject to known and unknown risks and uncertainties that may cause actual future experience and results to differ materially from the statements made. These statements are based on our current beliefs and expectations as to such future outcomes.

- Exploration activities were conducted on Noble's Project 81 prior to the adoption of National Instrument 43-101 ("NI 43-101"), as well as more recently when NI 43-101 was in force.
- Historical Exploration results that pre-date the adoption of NI 43-101 do not comply with current definitions prescribed by NI 43-101 or the *Canadian Institute of Mining*, and are disclosed only as indications of the presence of nickel, VMS, gold and other minerals. The historical models and data sets used to prepare these historical estimates are not available to Noble, nor have they been verified under current standards. In order to verify these resources as current estimates, Noble will have to conduct additional exploration work to verify the historic data. An independent qualified person for the purposes of NI 43-101 has not done sufficient work to classify these historical estimates as a current mineral resources or mineral reserves and Noble is not treating the historical estimates as a current mineral resources or mineral reserves.
- For information concerning the historical results of exploration activities conducted on Project 81, readers are encouraged to review "NI 43-101 Technical Report on the Project 81 Area", a technical report prepared for the Company by Ulrich Kretschmar, Phd, PGeo., that is available on the Company's website (<http://www.noblemineralexploration.com>) and under the Company's profile on SEDAR (www.sedar.com). This is the most recent technical report prepared in respect of the Property, in accordance with *National Instrument 43-101* (NI 43-101).
- Randy S.C. Singh, P.Geo. (ON), P.Eng (ON), Vice President, Exploration & Project Development for Noble Mineral Exploration Inc., is a "qualified person" as defined in NI 43-101, has reviewed and approved the disclosure of mineral exploration information contained in this presentation.

PRE AMBLE KINGSMILL NICKEL-COBALT DEPOSIT

- Kingsmill Township Property comprises part of Project 81 is ~10,000 hectares contiguous patented mining lands located ~20 km north and west of the world class Kidd Creek Mine celebrating its 52nd year of production.
- Modern Airborne Electromagnetic and Magnetic Geophysical Surveys were completed in the winter of 2012 followed up by a 12 NQ Diamond Drill Holes totalling 4,922 meter in 2 drill fences across the Ni-Co Deposit
- Preliminary Metallurgical Studies were conducted on composited drill core samples to measure recoverable Nickel ore characteristics and variability in ore properties.
- Limited Davis Tube analysis was also conducted on drill core samples to determine the recoverability of awaruite (a naturally occurring nickel-iron alloy) identified in drill core.
- Peroxide Fusion analysis was conducted by AGAT Laboratories in 2018 on 32 samples from the 2012 Diamond Drill Hole KML 12-03 to evaluate and compare the Cobalt grade of the deposit.
- The Kingsmill Nickel-Cobalt Deposit is a continuously mineralized serpentized peridotite body measuring a strike length of at least 2500m, having widths of 400-800m and a depth of greater than 600m.

NOBLE PROJECT 81 79,000 HECTARES LAND PACKAGE DRILL READY TARGETS



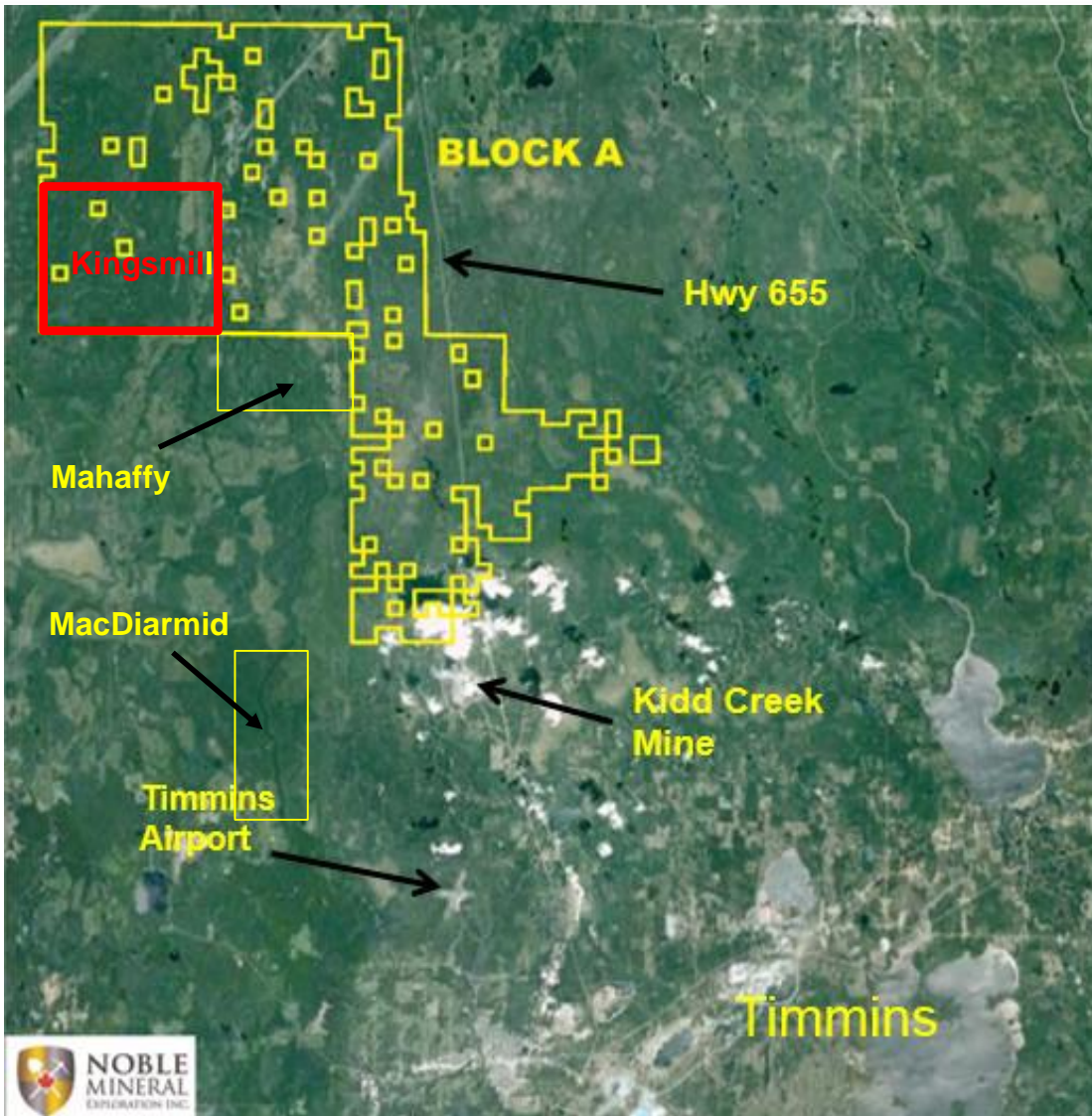
-  Drill Indicated Ni Targets
-  Drill Indicated Au Targets
-  Gold Targets
-  VMS Targets
-  Lucas Au Zone
-  Kingsmill Ni-Co Deposit
-  Noble P81 Property Boundary
-  Other Claims
-  Other Patents

Project 81's Area Play is a ~79,000 Ha Land Package

Located approximately 30 km north of Timmins world famous for >75mm oz. of Au production

2-3 km north of the world class Kidd Creek Mine celebrating its 52nd year of continuous production having produced >150mm tonnes of ore

GOOGLE MAP SHOWING TIMMINS AREA INFRASTRUCTURE



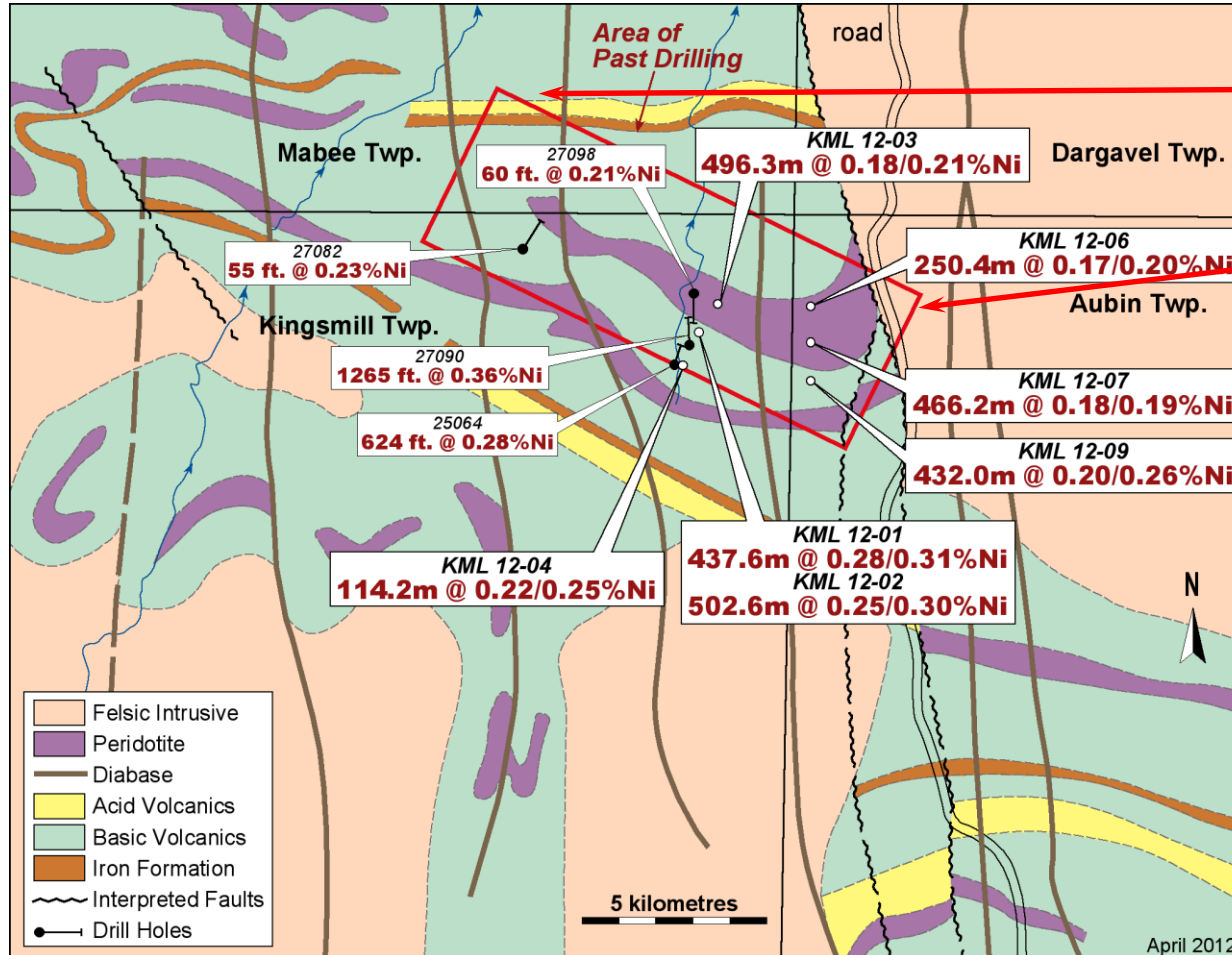
- Significant industry services, supplies and infrastructure in place in Timmins with access by paved Highway 655
- Ample access to power and water
- MoU signed with First Nations
- Drill programs proposed for fall/winter 2018-2019

KINGSMILL Ni-Co Deposit GENERALIZED GEOLOGY MAP

TSX.V:NOB
FWB:NB7
OTC.PK:NLPXF

showing

Historical & Recent Drilling



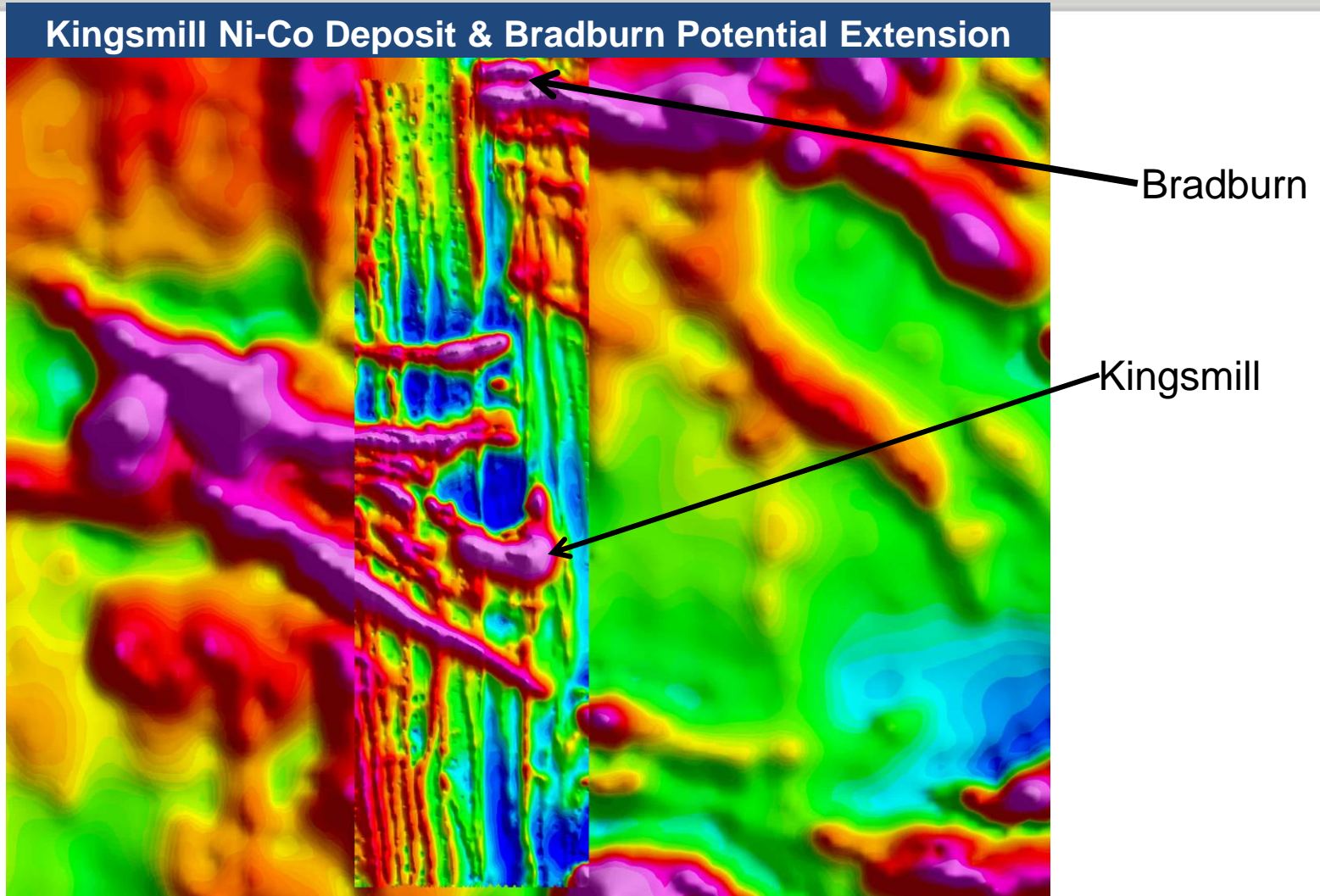
**Kingsmill
Nickel-Cobalt
Deposit**

* All historical data is non-NI 43-101 compliant

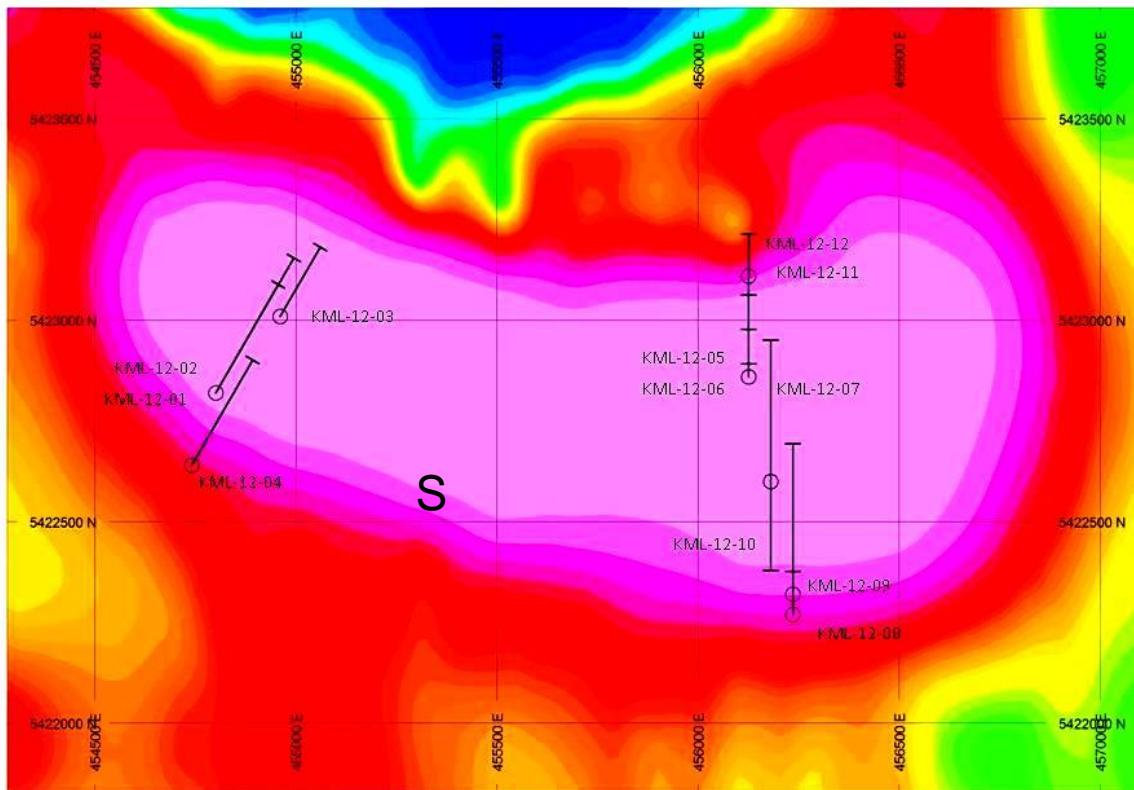
PROJECT 81 Kingsmill Ni-Co Deposit &

TSX.V:NOB
FWB:NB7
OTC.PK:NLPXF

Potential Bradburn Faulted Extension



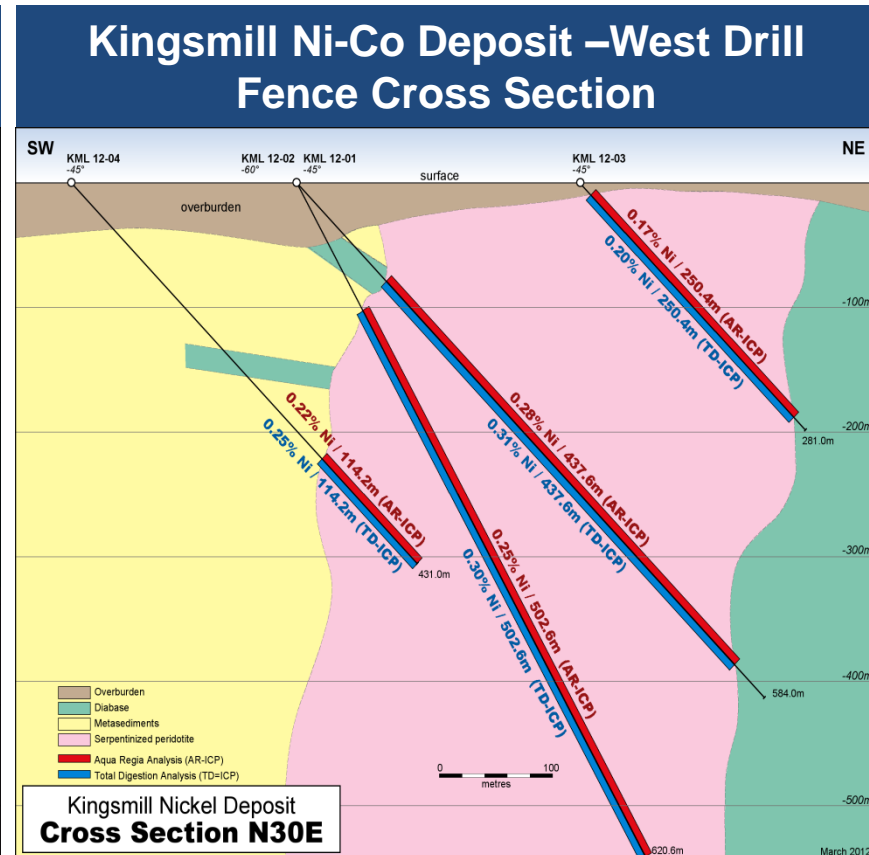
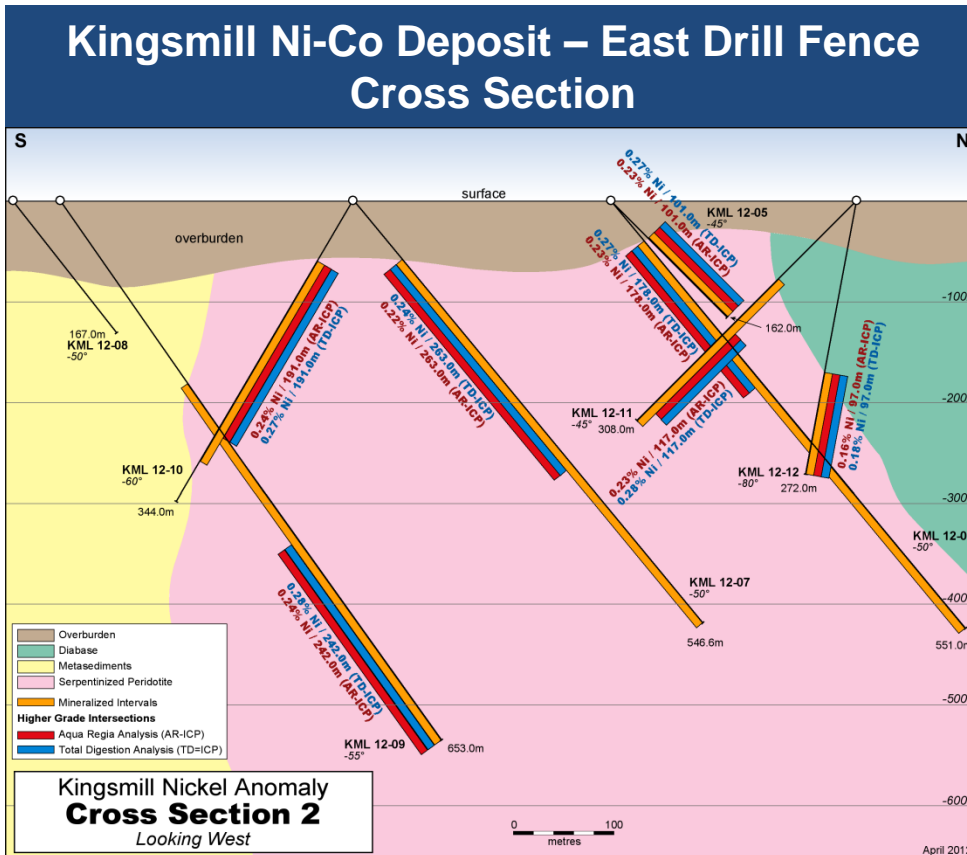
Kingsmill Ni-C Deposit , 2012 Drill Hole Locations



Deposit Size & Grade

- 2500m strike length
- 400-800m width
- >600m depth
- Av Grade:
 - 0.25% Ni
 - 113 ppm Co

PROJECT 81 KINGSMILL NICKEL-COBALT DEPOSIT (EAST and WEST DRILL FENCE)



PROJECT 81

KINGSMILL NICKEL-COBALT DISCOVERY

NOBLE 2012 - DRILL RESULTS

Drill Hole	From (m)	To (m)	Core Length (m)	Assay (AR-ICP)	Assay (TD-ICP)	Hole Depth (m)
KML 12-01	111.0	548.6	437.6	0.28% Ni	0.27% Ni	584.0
<i>Incl.</i>	197.0	221.0	24.0	0.30% Ni	0.28% Ni	
<i>Incl.</i>	233.0	257.0	24.0	0.30% Ni	0.28% Ni	
<i>Incl.</i>	317.0	342.0	25.0	0.31% Ni	0.28% Ni	
<i>Incl.</i>	346.0	447.0	101.0	0.31% Ni	0.32% Ni	
<i>Incl.</i>	416.0	446.0	30.0	0.28% Ni	0.33% Ni	
KML 12-02	118.0	620.6	502.6	0.25% Ni	0.30% Ni	620.6
<i>Incl.</i>	295.0	617.0	322.0	0.26% Ni	0.32% Ni	
<i>Incl.</i>	462.0	501.0	39.0	0.30% Ni	0.33% Ni	
KML 12-03	14.0	264.4	250.4	0.17% Ni	0.20% Ni	281.0
<i>Incl.</i>	142.0	264.4	122.4	0.23% Ni	0.27% Ni	
KML 12-04	314.0	428.2	114.2	0.22% Ni	0.25% Ni	431.0
<i>Incl.</i>	356.0	428.2	72.2	0.24% Ni	0.27% Ni	
<i>Incl.</i>	417.0	428.2	11.2	0.26% Ni	0.29% Ni	

PROJECT 81

KINGSMILL NICKEL-COBALT DISCOVERY

NOBLE 2012 - DRILL RESULTS

Drill Hole	From (m)	To (m)	Core Length (m)	Assay (AR-ICP)	Assay (TD-ICP)	Hole Depth (m)
KML 12-05	58.0*	159.0*	101.0*	0.23% Ni	0.27% Ni	167
	*Terminated – Drill Problem					
KML 12-06	54.7	551.0	496.3	0.18% Ni	0.21% Ni	551
<i>Incl.</i>	57.0	304.0	247.0	0.22% Ni	0.26% Ni	
<i>Incl.</i>	57.0	235.0	178.0	0.23% Ni	0.27% Ni	
KML 12-07	80.0	546.2	466.2	0.18% Ni	0.19% Ni	546.6
<i>Incl.</i>	80.0	343.0	263.0	0.22% Ni	0.24% Ni	
<i>Incl.</i>	80.0	137.0	57.0	0.24% Ni	0.28% Ni	
KML 12-08	Terminated – Drilling Problem					167.0
KML 12-09	221.0	653.0	432.0	0.20% Ni	0.26% Ni	653
<i>Incl.</i>	298.0	653.0	355.0	0.23% Ni	0.27% Ni	
<i>Incl.</i>	411.0	653.0	242.0	0.24% Ni	0.28% Ni	

PROJECT 81 KINGSMILL NICKEL-COBALT DISCOVERY 2012 DRILL RESULTS

Drill Hole	From (m)	To (m)	Core Length (m)	Assay (AR-ICP)	Assay (TD-ICP)	Hole Depth (m)
KML 12-10	78.0	306.58	228.58	0.24%	0.26%	344.0
KML 12-11	104.0	305.0	201.0	0.23%	0.24%	308.0
KML 12-12	161.0	272.0	111.0	0.16%	0.17%	272.0

KINGSMILL NICKEL-COBALT DEPOSIT

2012 NICKEL-COBALT DRILL HOLE ASSAY RESULTS

DDH	Nickel Grade (TD-ICP)	Cobalt Grade (ppm) (TD-ICP)	From (meters)	To (meters)	Mineralized zone (meters)
KML 12-01	0.27%	112.4	62.0	551.0	489.0
Incl.	0.29%	122.7	346.0	540.0	194.0
KML 12-02	0.30%	117.1	113.0	620.6	507.6
KML 12-03	0.20%	130.0	14.0	281.0	267.0
KML 12-04	0.25%	113.4	314.0	428.2	114.2
KML 12-05	0.26%	101.6	54.0	167.0	113.0
KML 12-06	0.21%	106.8	56.0	549.0	493.0
KML 12-07	0.19%	114.4	80.0	546.2	466.2
KML 12-09	0.25%	105.4	201.0	653.0	452.0
KML 12-10	0.26%	113.0	78.0	306.58	228.58
KML 12-11	0.24%	114.0	104.0	305.0	201.0
KML 12-12	0.17%	106.4	161.0	272.0	111.0

PROJECT 81

KINGSMILL NICKEL-COBALT DEPOSIT

KML 12- 03 CHECK ASSAY RESULTS COMPARISON

AGAT	2018		2018	ActLabs	From	To		2012	2018		2012	2018
Sample Number	AGAT		AGAT	Sample Number	(m)	(m)		Actlabs	AGAT		Actlabs	AGAT
	Ni - %		Co -%					TD-ICP	Peroxide		TD-ICP	Peroxide
								Ni-ppm	Ni-ppm		Co-ppm	Co-ppm
E6637451	0.088		0.016	1285080	112	113		862	882		146	164
E6637452	0.093		0.016	1285081	113	114		973	935		159	164
E6637453	0.09		0.017	1285082	114	115		923	900		162	167
E6637454	0.091		0.017	1285083	115	116		941	913		164	172
E6637455	0.092		0.017	1285084	116	117		970	924		162	166
E6637456	0.092		0.017	1285085	117	118		938	921		151	168
E6637457	0.09		0.017	1285086	118	119		947	896		159	170
E6637458	0.083		0.017	1285087	119	120		895	833		153	167
E6637459	0.061		0.016	1285088	120	121		639	606		152	165
E6637460	0.056		0.017	1285089	121	122		579	565		152	167
E6637461	0.044		0.017	1285090	122	123		437	442		147	169
E6637462	0.039		0.018	1285091	123	124		387	388		158	176
E6637463	0.049		0.016	1285092	124	125		508	486		153	162
E6637464	0.053		0.017	1285093	125	126		545	528		158	168
E6637465	2.01		0.073									
E6637466	0.167		0.016	1285103	135	136		1820	1670		153	157
E6637467	0.147		0.017	1285104	136	137		1630	1470		155	166
E6637468	0.091		0.017	1285105	137	138		997	914		158	167
E6637469	0.094		0.017	1285106	138	139		957	941		154	166
E6637470	0.092		0.015	1285107	139	140		940	920		147	154
E6637471	0.192		0.013	1285108	140	141		2160	1920		135	133
E6637472	0.223		0.008									
E6637473	0.264		0.01	1285227	255	256		2600	2640		94	98
E6637474	0.252		0.01	1285228	256	257		2650	2520		97	96
E6637475	0.248		0.012	1285229	257	258		2680	2480		125	120
E6637476	0.271		0.012	1285230	258	259		2730	2710		120	123
E6637477	0.254		0.015	1285231	259	260		2530	2540		142	146
E6637478	0.271		0.013	1285232	260	261		2810	2710		133	135
E6637479	0.279		0.014	1285233	261	262		2820	2790		140	142
E6637480	0.028		0.006	1285236	264.4	265.4		188	285		55	59
E6637481	0.01		0.005	1285237	265.4	266.4		53	102		49	52
E6637482	0.005		0.005	1285238	266.4	267.4		48	52		46	47
E6637483	0.004		0.005	1285240	272	273		46	41		46	45
E6637484	0.009		0.005	1285241	280	281		53	91		49	52
E6637485	0.225		0.008									

Owner & Project	Project Location	Resource	Market Capitalization (millions)	Implied Project Value (millions)
Royal Nickel Corp. (Dumont)	Quebec, Canada	M&I - 1,410M tonnes @ 0.27% Ni & 107ppm Cobalt Inf. - 695M tonnes @ 0.26% Ni & 107ppm Cobalt	\$90.7	\$65
Giga Metals (Turnagain)	British Columbia, Canada	M&I - 865M tonnes @ 0.21% Ni & 0.013% Cobalt Inf. – 976M tonnes @ 0.20% Ni & 0.013% Cobalt	\$8.5	\$8.5
Noble Mineral Exploration Inc.	Ontario, Canada	Target Potential 2+ billion tonnes @ 0.25% Ni & 113ppm Cobalt	\$11.2	\$?

PROJECT 81

ADDITIONAL POTENTIAL NICKEL-COBALT DEPOSITS

HISTORICAL ASSAY RESULTS*

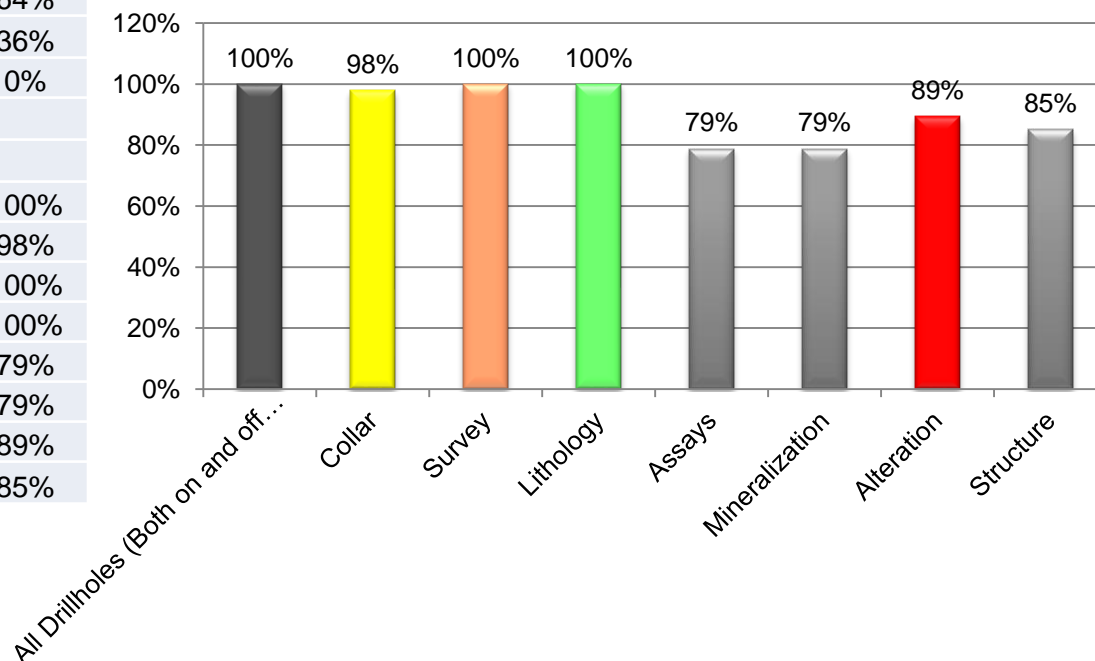
Project 81	Township	Hole #	Mineralized Zone (ft)	Mineralized Intercept (ft)	Grade* (% Ni)
Other Nickel Discoveries	Aubin	31903	135.0 to 434.0	299	0.23%
	Aubin	31901	190.0 to 673.0	418	0.24%
	Nesbitt	25027	391.0 to 855.0	379	0.23%
	Nesbitt	27083	780.0 to 1634.0	535	0.28%
	Dargavel	25014	1088.5 to 1505.0	416.5	0.21%
	Crawford	25050	114.0 to 1648.0	1534	0.25%

*All historical assay data is non-NI 43-101 compliant
Samples were not analysed for Cobalt

DATABASE SUMMARY		
Total Drillholes (Both on and off Property)	47	100%
Diamond Drilling	30	64%
RC Drilling	17	36%
Unknown Drilling Type	0	0%

CONTAINED DATA		
All Drillholes (Both on and off Property)	47	100%
Collar	46	98%
Survey	47	100%
Lithology	47	100%
Assays	37	79%
Mineralization	37	79%
Alteration	42	89%
Structure	40	85%

Kingsmill Current Database for On and Off Property Drillholes



December 2018



**NOBLE
MINERAL**
EXPLORATION INC.

Kingsmill Nickel-Cobalt Deposit

Kingsmill Township

Management:

H. Vance White, President & Chief Executive Officer
Randy Singh PGeo(ON), PEng(ON), VP Exploration & Project Development
Corinna de Beer, Corporate Communications

2500 – 120 Adelaide St. W
Toronto, Ontario
Canada M5H 1T1

Phone: 416-214-2250 | Email: info@noblemineralexploration.com | Fax: 416-367-1954
www.noblemineralexploration.com

TSX.V:NOB
FWB:NB7
OTC.PK:NLPXF