

December 2018



**NOBLE
MINERAL**
EXPLORATION INC.

Project 81

Lucas Gold Project

Lucas Township

Timmins-Cochrane

Northern Ontario

Canada

TSX.V:NOB
FWB:NB7
OTC.PK:NLPXF

Certain statements contained in this presentation that are forward-looking in nature are based on the current beliefs and assumptions of the Company's management.

When used in this presentation, the words "may," "could," "should," "anticipate," "believe," "estimate," "expect," "intend," "plan," "predict," and similar expressions and their variants may be used to identify forward-looking statements. Such statements are valid only as of today, and we disclaim any obligation to update this information.

These statements are subject to known and unknown risks and uncertainties that may cause actual future experience and results to differ materially from the statements made. These statements are based on our current beliefs and expectations as to such future outcomes.

- Exploration activities were conducted on Noble's Project 81 prior to the adoption of National Instrument 43-101 ("NI 43-101"), as well as more recently when NI 43-101 was in force.
- Historical Exploration results that pre-date the adoption of NI 43-101 do not comply with current definitions prescribed by NI 43-101 or the *Canadian Institute of Mining*, and are disclosed only as indications of the presence of nickel, VMS, gold and other minerals. The historical models and data sets used to prepare these historical estimates are not available to Noble, nor have they been verified under current standards. In order to verify these resources as current estimates, Noble will have to conduct additional exploration work to verify the historic data. An independent qualified person for the purposes of NI 43-101 has not done sufficient work to classify these historical estimates as a current mineral resources or mineral reserves and Noble is not treating the historical estimates as a current mineral resources or mineral reserves.
- For information concerning the historical results of exploration activities conducted on Project 81, readers are encouraged to review "NI 43-101 Technical Report on the Project 81 Area", a technical report prepared for the Company by Ulrich Kretschmar, Phd, PGeo., that is available on the Company's website (<http://www.noblemineralexploration.com>) and under the Company's profile on SEDAR (www.sedar.com). This is the most recent technical report prepared in respect of the Property, in accordance with *National Instrument 43-101* (NI 43-101).
- Randy S.C. Singh, P.Geo. (ON), P.Eng (ON), Vice President, Exploration & Project Development for Noble Mineral Exploration Inc., is a "qualified person" as defined in NI 43-101, has reviewed and approved the disclosure of mineral exploration information contained in this presentation.

PRE AMBLE LUCAS GOLD PROJECT









- In 2018 Noble completed 15 NQ size diamond drill holes totaling 3,183.93m covering approximately 650m strike length of the 1700m Gold Mineralized structure/trend identified from 2012 and 2018 Airborne ElectroMagnetic and Differential Magnetic Surveys.
- Noble located 37 historical drill-hole collars in the field, and twinned 3 (three) of these historical drill holes, namely holes L80-04 with LUC 18-21, L80-13 with LUC18- 19 and L81-36 with LUC 18-20.
- The Lucas Gold Project has 6 discrete IP anomalous trends which require follow-up exploration. Only one such trend has been investigated by Diamond Drilling to date.
- Gold mineralization in the Lucas Gold Deposit is interpreted to be structurally controlled and occur as discrete lenses stacked within the pyrite + gold mineralized tuff unit.

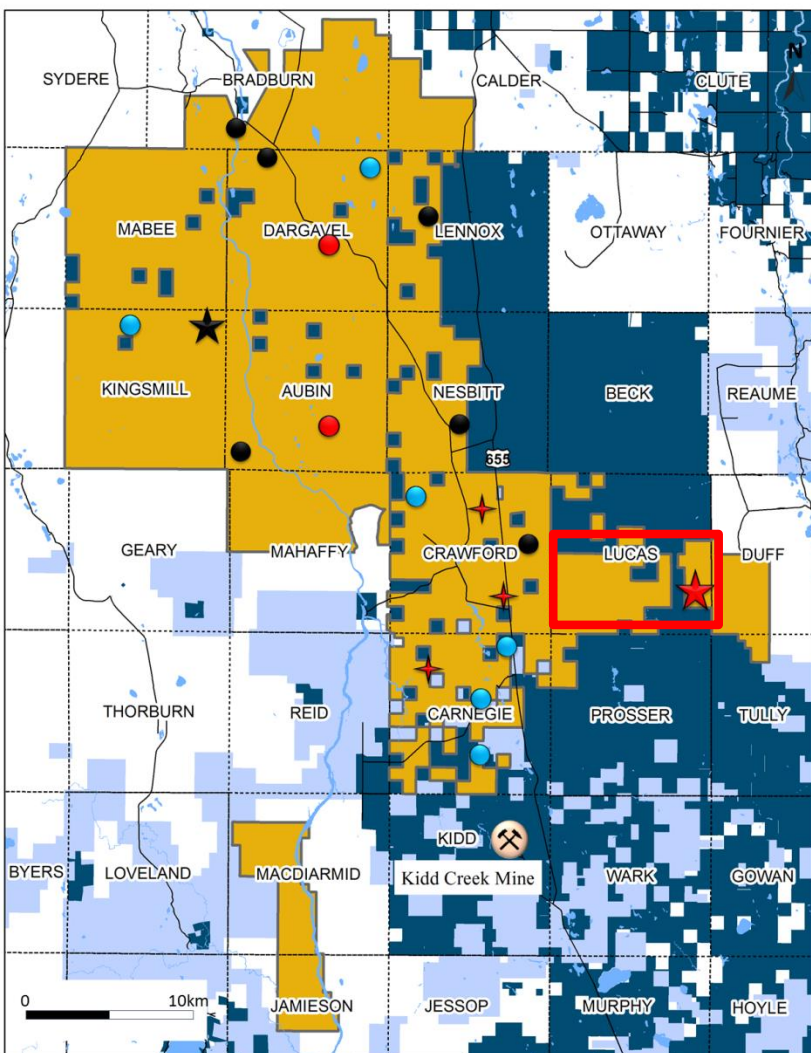
NOBLE PROJECT 81 79,000 HECTARES LAND PACKAGE DRILL READY TARGETS

**Project 81's Area
Play is a ~79,000 Ha
Land Package**

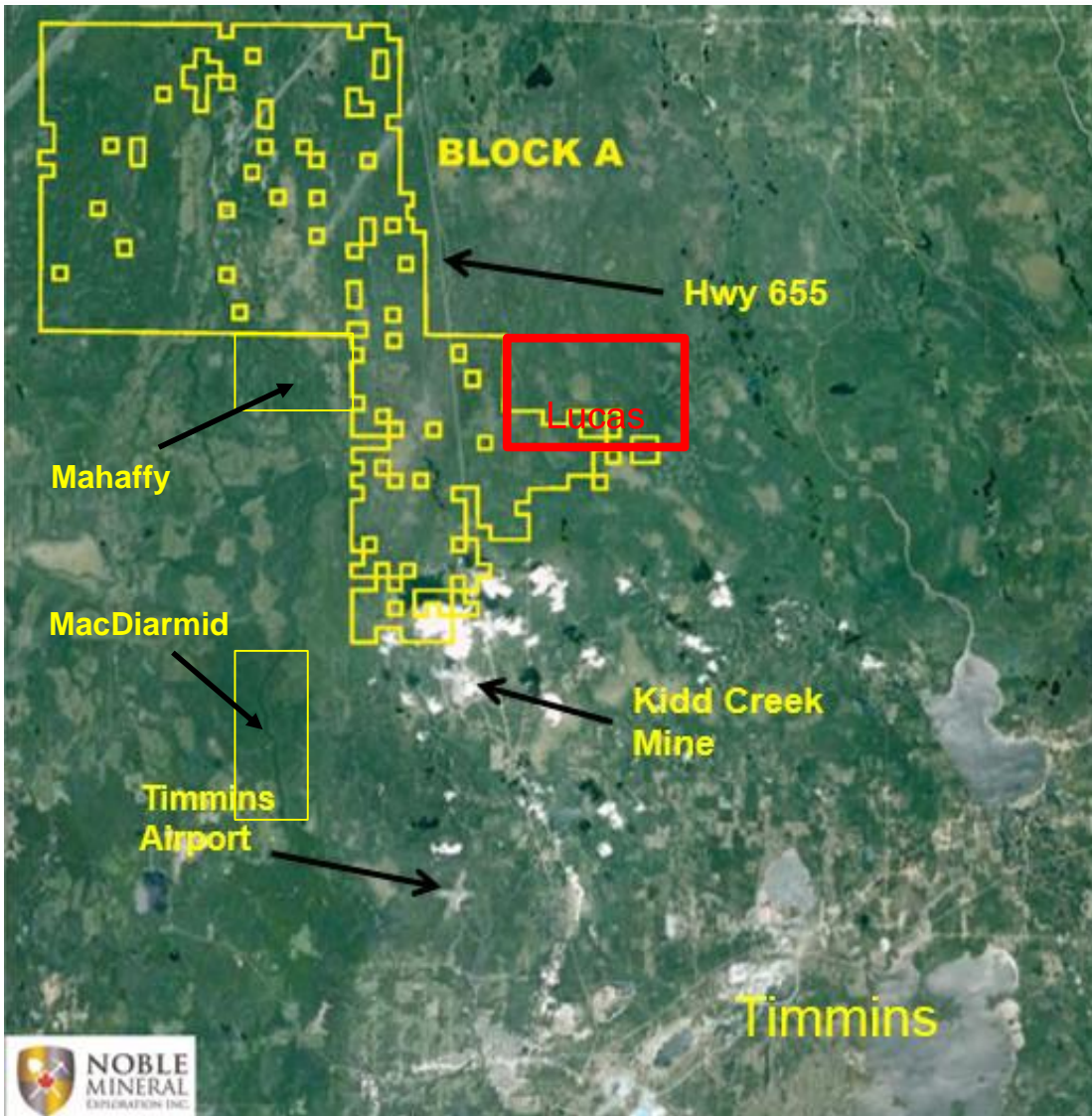
**Located
approximately 30 km
north of Timmins
world famous for
>75mm oz. of Au
production**

**2-3 km north of the
world class Kidd
Creek Mine
celebrating its 52nd
year of continuous
production having
produced >150mm
tonnes of ore**

-  Drill Indicated Ni Targets
-  Drill Indicated Au Targets
-  Gold Targets
-  VMS Targets
-  Lucas Au Zone
-  Kingsmill Ni-Co Deposit
-  Noble P81 Property Boundary
-  Other Claims
-  Other Patents



GOOGLE MAP SHOWING TIMMINS AREA INFRASTRUCTURE

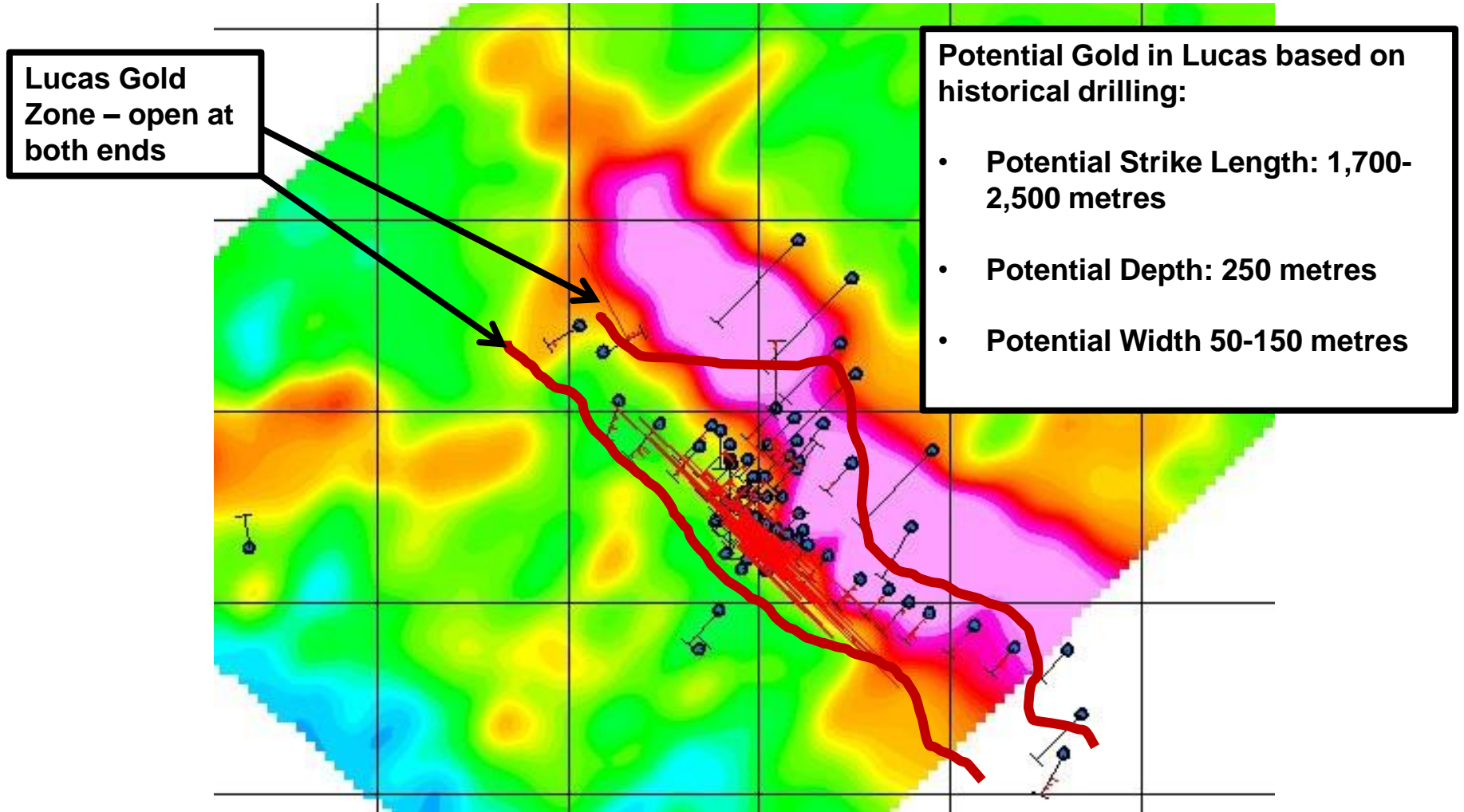


- Significant industry services, supplies and infrastructure in place in Timmins with access by paved Highway 655
- Ample access to power and water
- MoU signed with First Nations
- Drill programs proposed for fall/winter 2018-2019

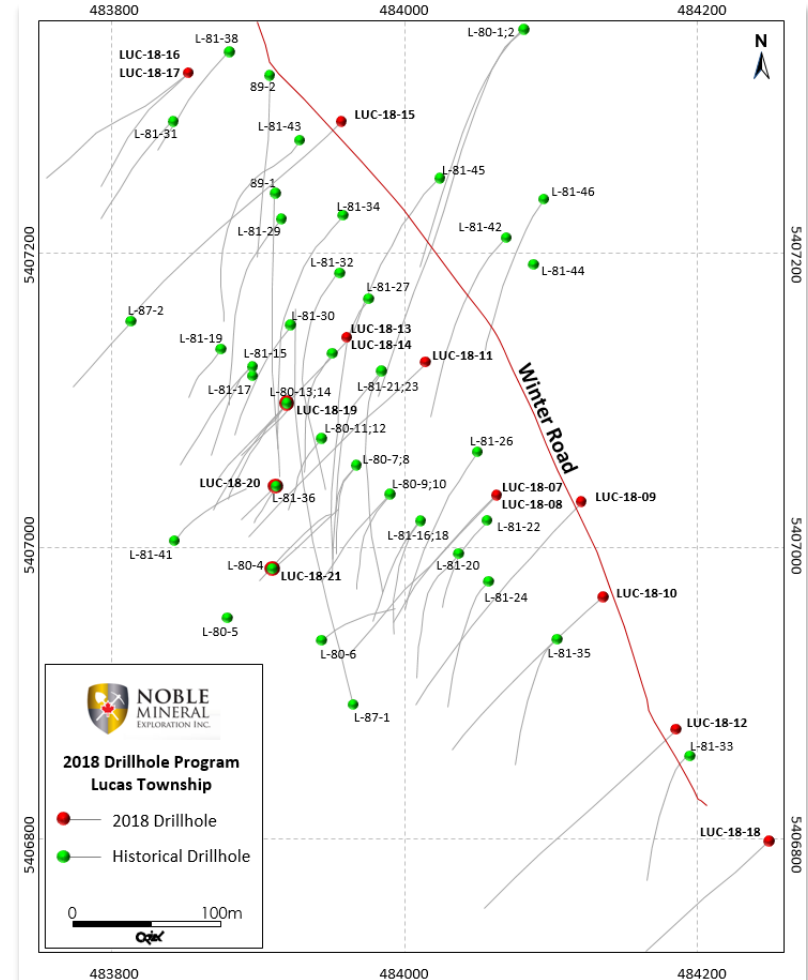
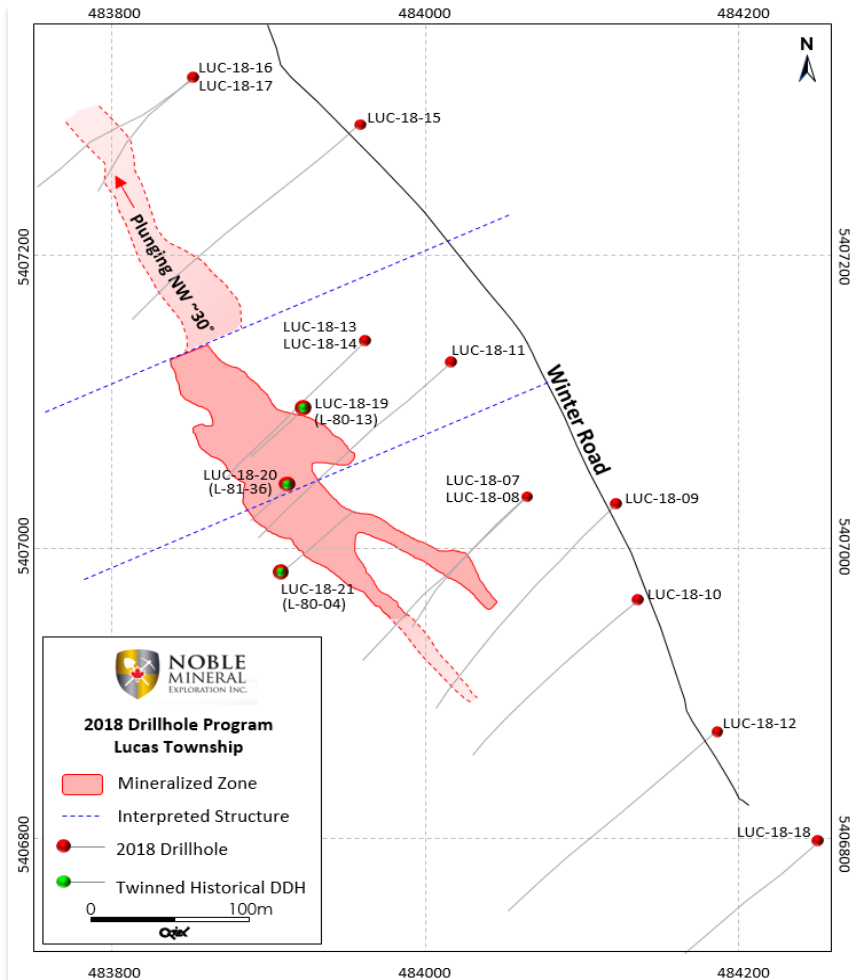
LUCAS GOLD PROJECT LUCAS TOWNSHIP

TSX.V:NOB
FWB:NB7
OTC.PK:NLPXF

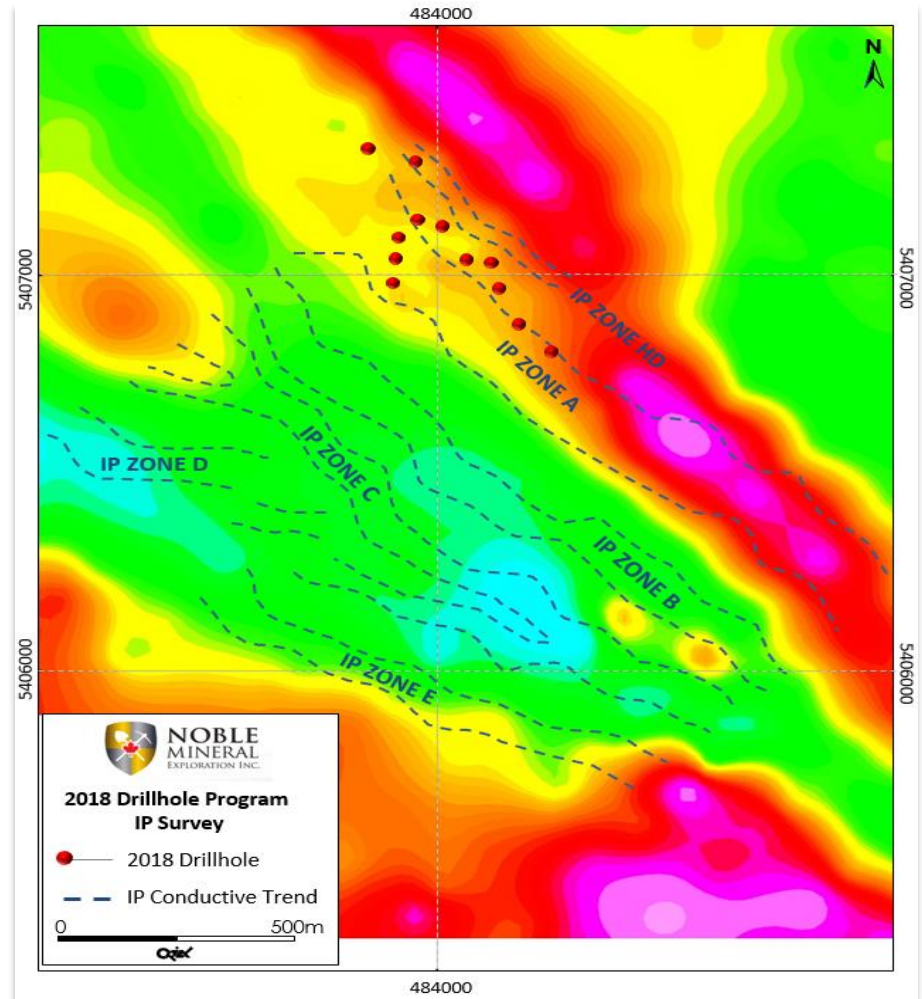
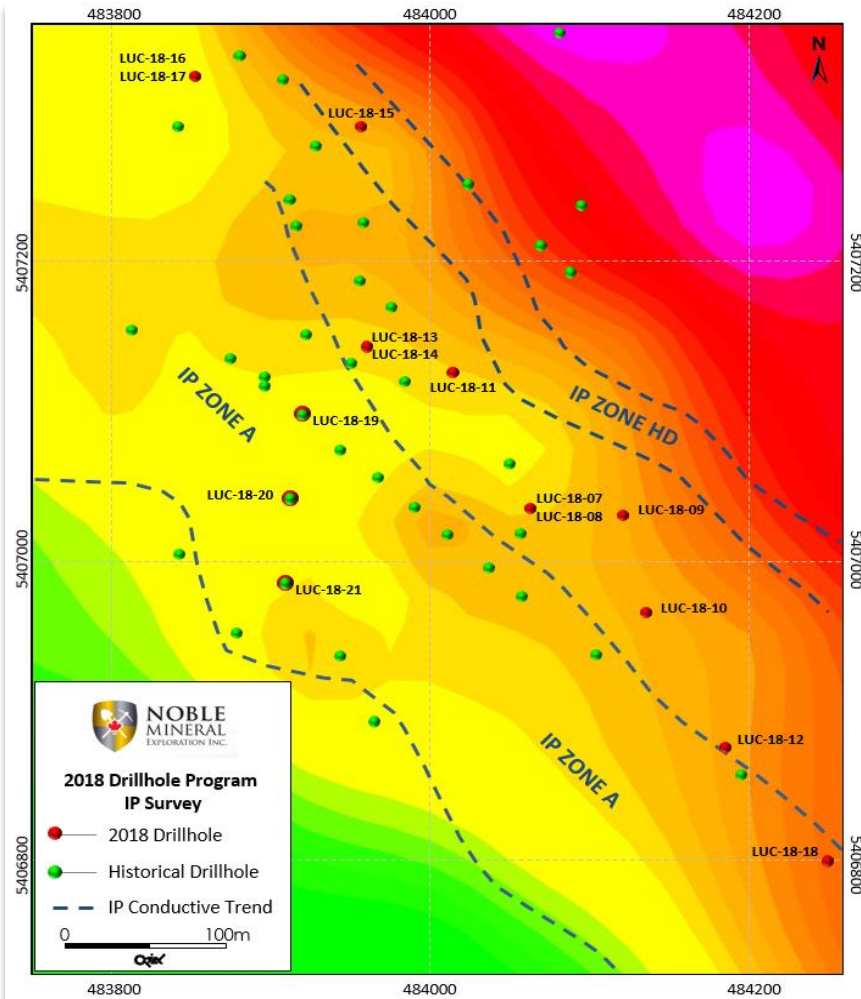
Historical Drilling with Gold Zone Outline



LUCAS GOLD PROJECT GOLD ZONE, 2018 DRILL HOLES & HISTORICAL DRILL HOLES LOCATION



LUCAS GOLD PROJECT IP SURVEY SHOWING PARALLEL ZONES



LUCAS GOLD PROJECT

2018 DRILL HOLE ASSAYS RESULTS

Noble's 2018 Drilling

DDH	GOLD (g/t)	Interval (meters)	From (meters)	To (meters)
LUC-18-11	1.10	30.90	163.00	193.90
Incl.	1.20	7.00	177.00	184.00
And	4.33	5.15	188.75	193.90
Incl.	5.05	2.75	188.75	191.50.
Incl	5.79	1.40	192.50	193.90
LUC-18-13	1.15	23.30	135.50	158.80
Incl.	1.56	2.00	135.50	137.50
Incl.	1.23	2.50	140.00	142.50
Incl.	1.21	3.00	145.00	148.00
Incl.	2.68	2.25	150.75	153.00
Incl.	1.59	4.10	153.50	157.60

Noble's 2018 Drilling

DDH	GOLD (g/t)	Interval (meters)	From (meters)	To (meters)
LUC-18-14	0.58	4.70	142.30	147.00
And	1.70	22.60	154.50	177.10
Incl.	1.57	1.50	162.00	163.50
Incl.	6.06	2.50	164.50	167.00
Incl.	2.52	3.00	168.50	171.50
Incl.	2.17	4.50	172.00	176.50
LUC-18-19	0.50	7.50	105.00	112.50
And	1.04	14.00	113.00	127.00
And	2.55	10.00	128.00	138.00
Incl.	4.40	1.50	128.00	129.50
Incl.	2.78	6.30	131.00	137.30

LUCAS GOLD PROJECT

2018 DRILL HOLE ASSAYS RESULTS

Noble's 2018 Drilling					Noble's 2018 Drilling				
DDH	GOLD (g/t)	Interval (meters)	From (meters)	To (meters)	DDH	GOLD (g/t)	Interval (meters)	From (meters)	To (meters)
LUC-18-20	1.42	5.00	57.50	62.50	LUC 18-21	1.84	9.50	70.00	79.50
Incl.	1.87	1.50	57.50	59.00	Incl.	3.21	3.00	73.00	76.00
Incl.	1.54	2.00	60.00	62.00	Incl.	1.60	3.00	76.50	79.50
And	3.10	9.00	82.00	91.00	And	3.13	3.40	100.60	104.00
Incl.	4.82	4.60	85.00	91.00	Incl.	4.90	1.90	100.60	102.50
Incl.	7.85	2.30	87.30	89.60	And	1.52	28.00	108.00	136.00
					Incl.	2.48	9.50	108.00	117.50
					Incl.	4.20	3.25	110.25	113.50
					Incl.	2.51	2.50	114.00	116.50
					And	1.83	8.00	121.00	129.00
					Incl.	3.12	3.70	125.30	129.00
					And	0.95	6.80	158.00	164.80
					Incl.	1.68	2.00	158.00	160.00
					Incl.	1.39	1.80	163.50	164.80

LUCAS GOLD PROJECT

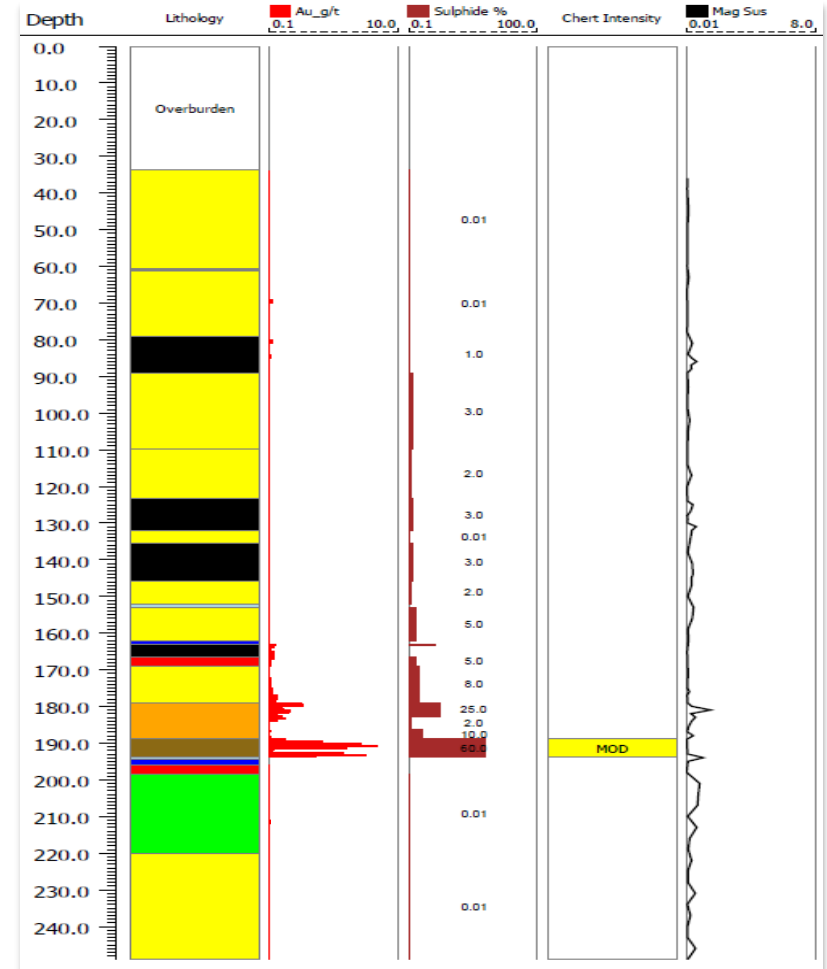
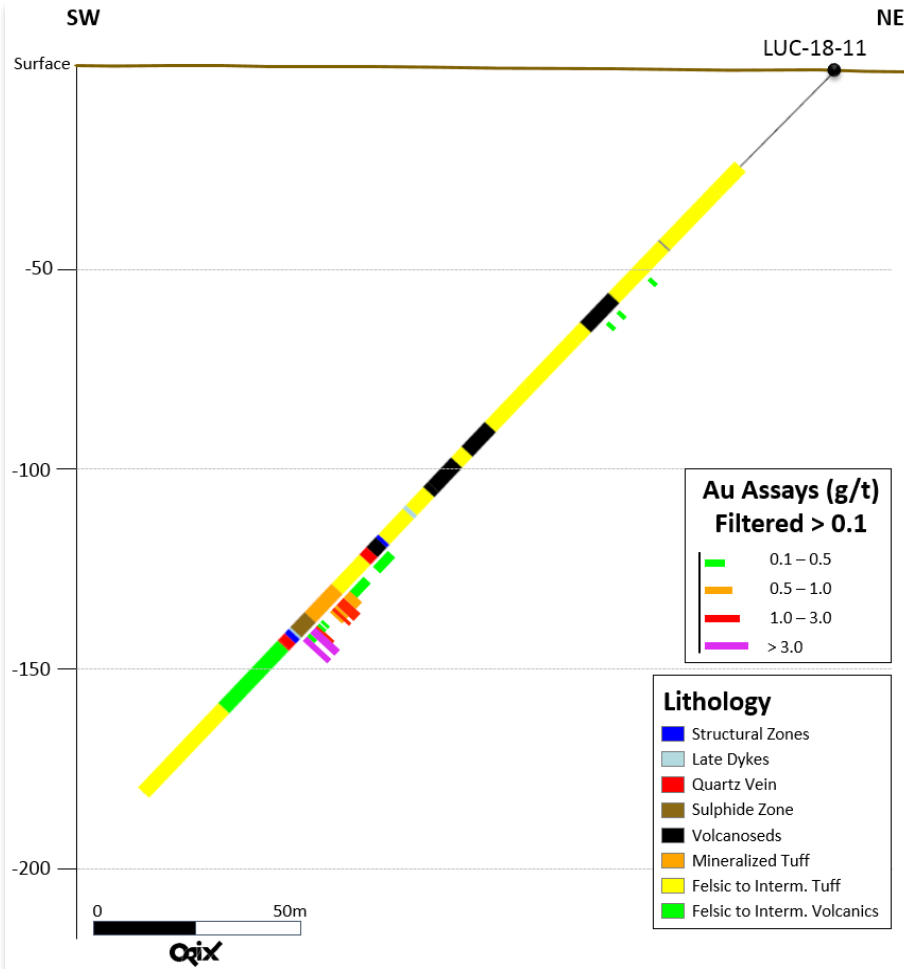
TWINNED HOLES COMPARISON TABLE

Twinned Holes Comparison Table

Noble's 2018 Drilling					Historical 1980's Drilling				
DDH	GOLD (g/t)	Interval (meters)	From (meters)	To (meters)	DDH	GOLD (g/t)	Interval (meters)	From (meters)	To (meters)
LUC-18-19	1.22	36.50	101.50	138.00	L-80-13	1.42	33.46	99.06	131.06
Incl.	2.69	9.30	128.00	137.30	Incl.	3.52	9.12	120.40	129.54
LUC-18-20	1.42	5.00	57.50	62.50	L-81-36	1.66	5.18	54.25	59.44
And	2.03	15.00	76.00	91.00	And	2.17	15.52	75.9	91.44
Incl.	2.64	11.00	80.00	91.00	Incl.	3.08	9.74	80.16	89.92
LUC-18-21	1.45	37.50	98.50	136.00	L-80-04	2.77	35.89	98.45	134.42
Incl.	2.08	16.90	100.60	117.50	Incl.	3.73	13.38	99.97	113.39
Incl.	1.21	13.50	118.00	131.50	Incl.	3.26	13.54	117.96	131.52

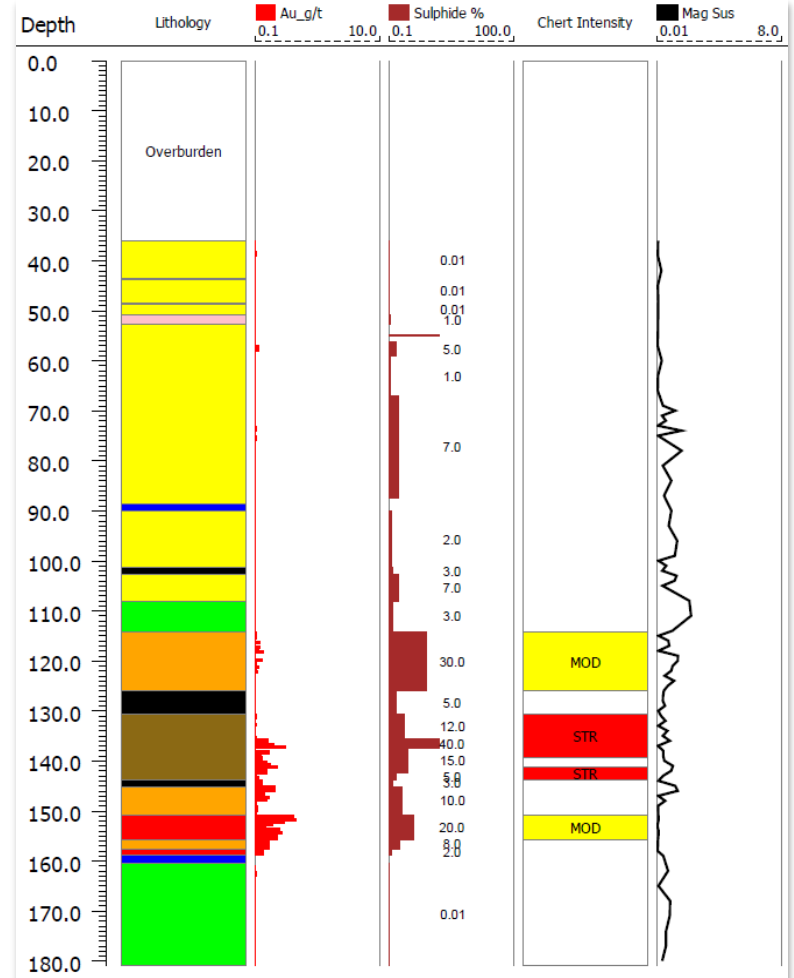
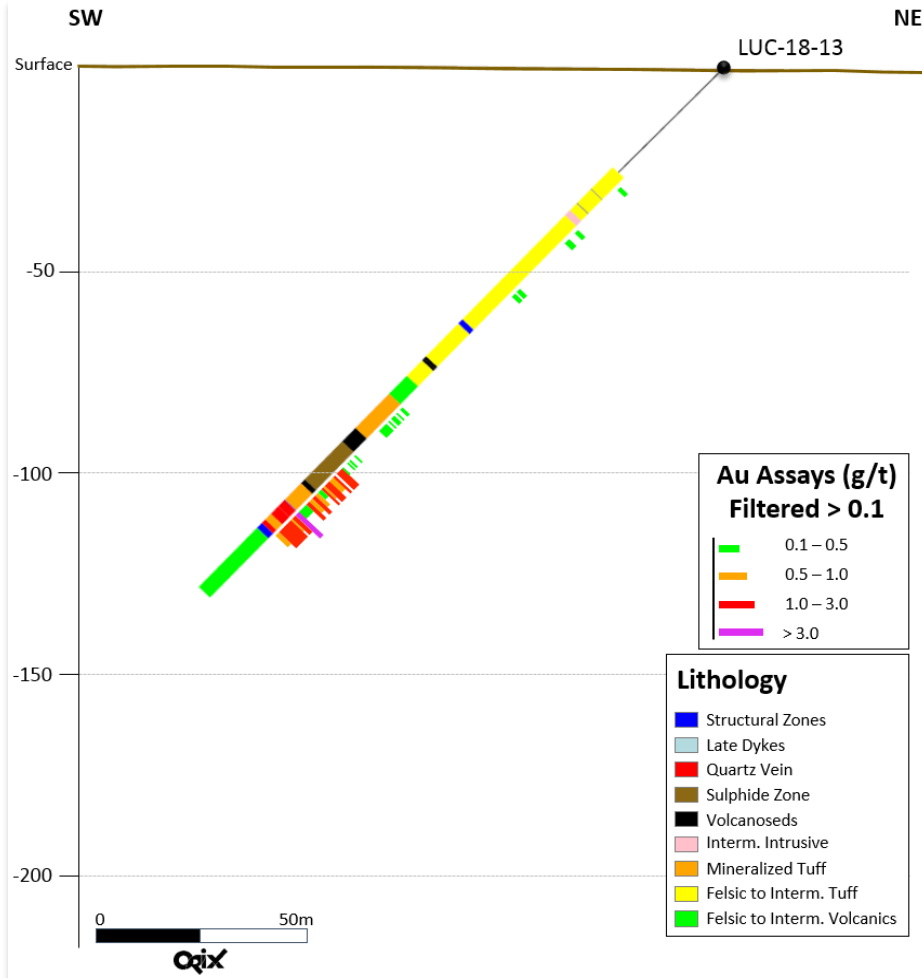
LUCAS GOLD PROJECT

LUC 18-11 DRILL HOLE SECTION



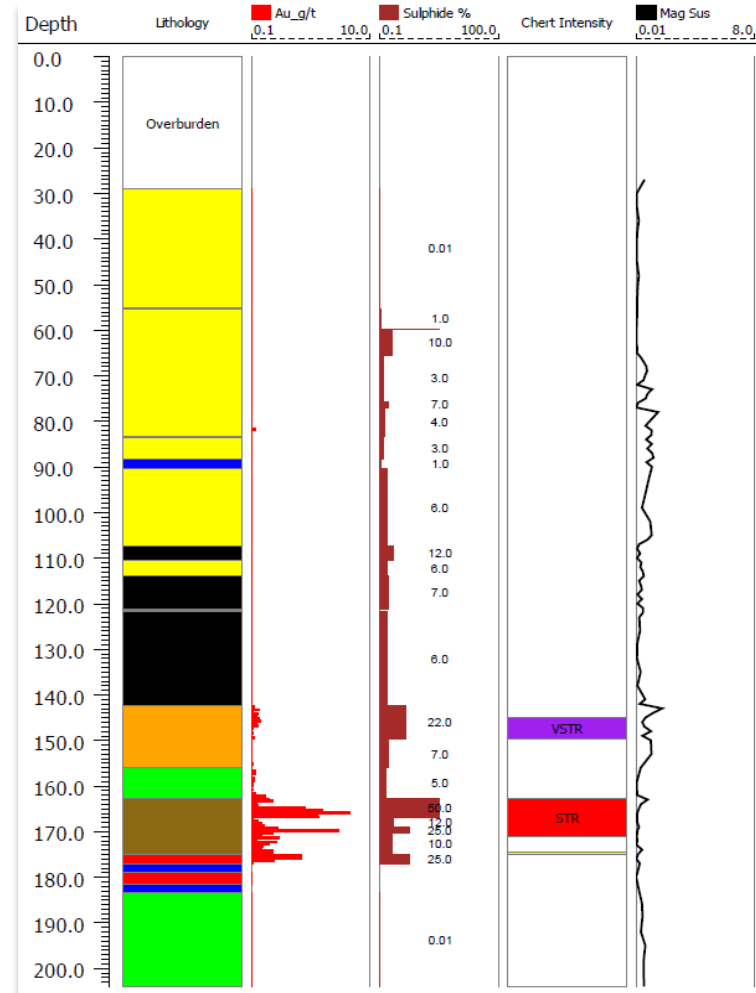
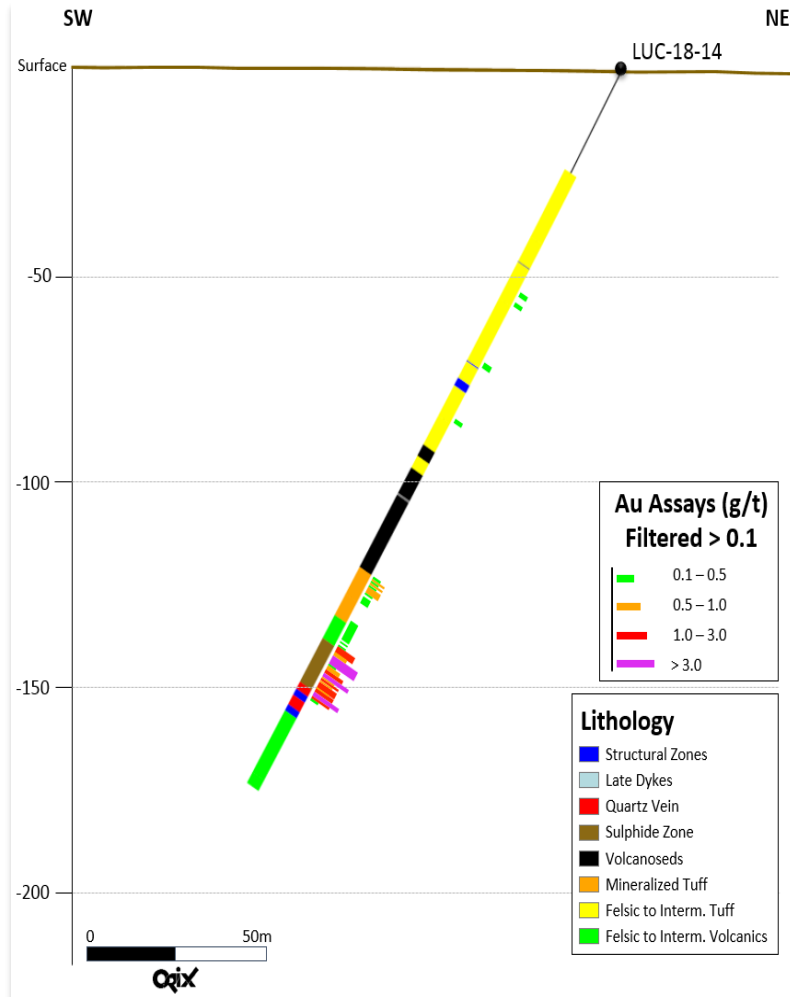
LUCAS GOLD PROJECT

LUC 18-13 DRILL HOLE SECTION

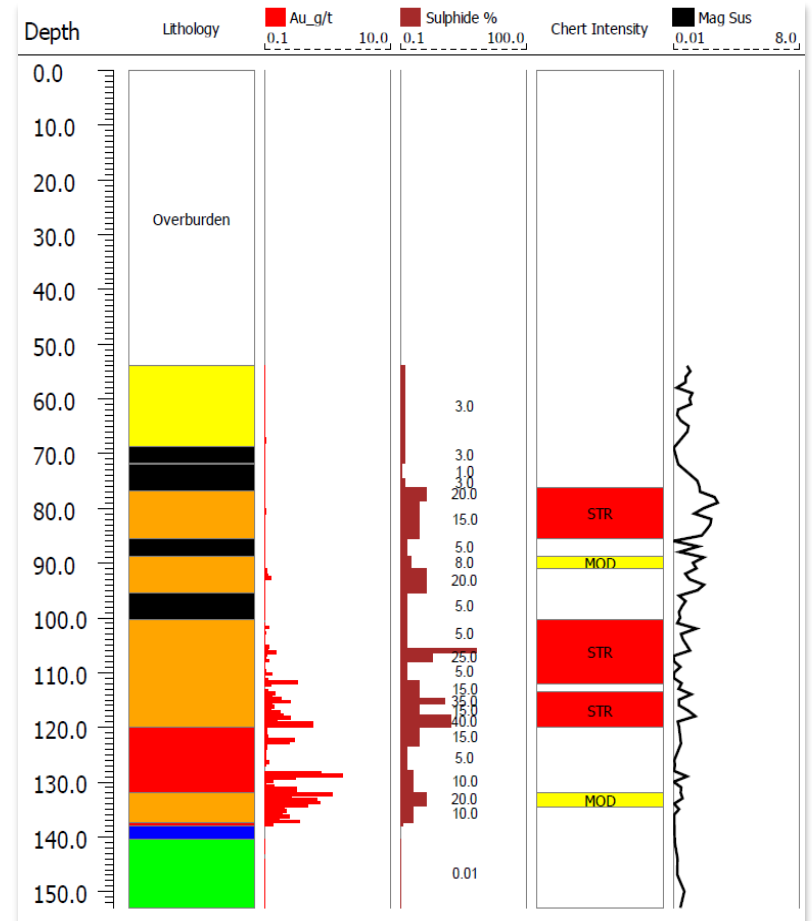
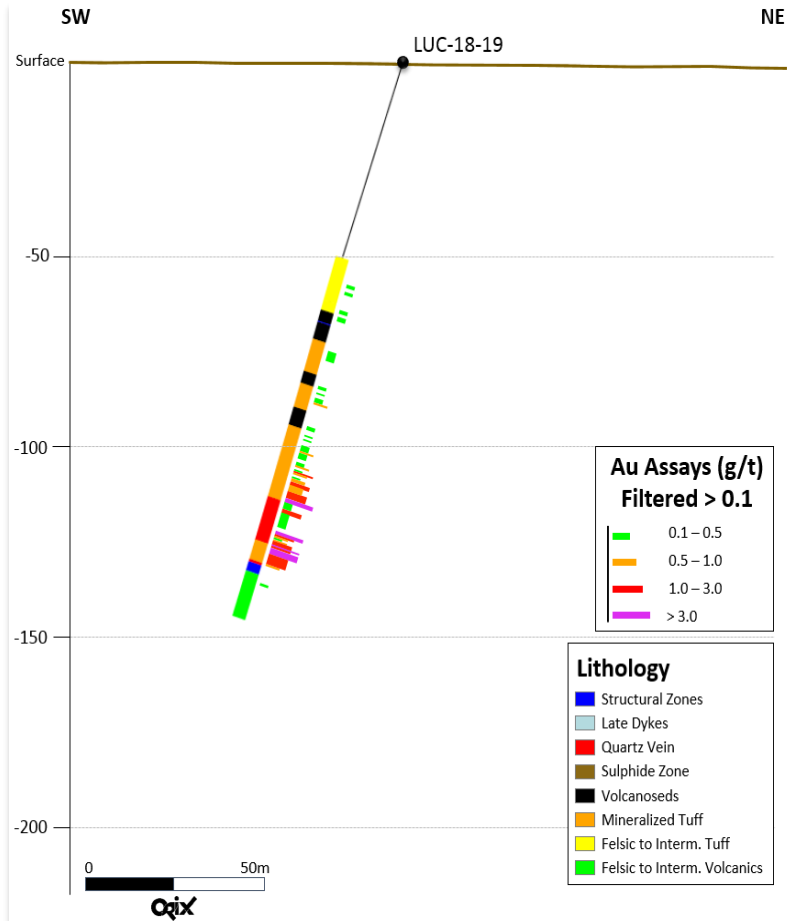


LUCAS GOLD PROJECT

LUC 18-14 DRILL HOLE SECTION

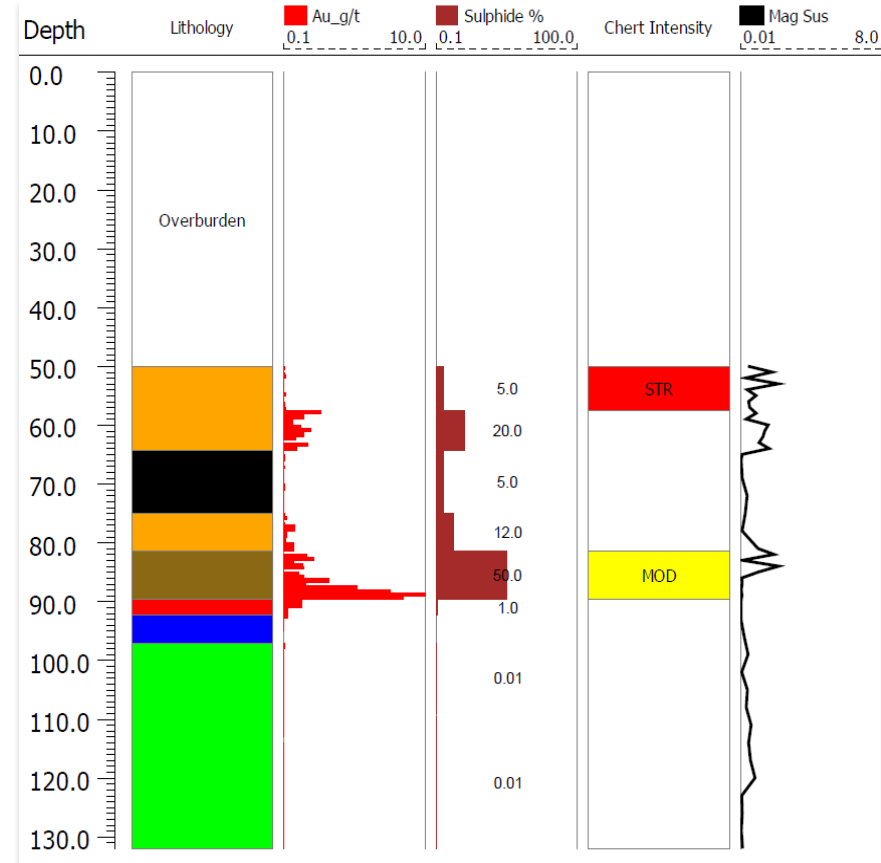
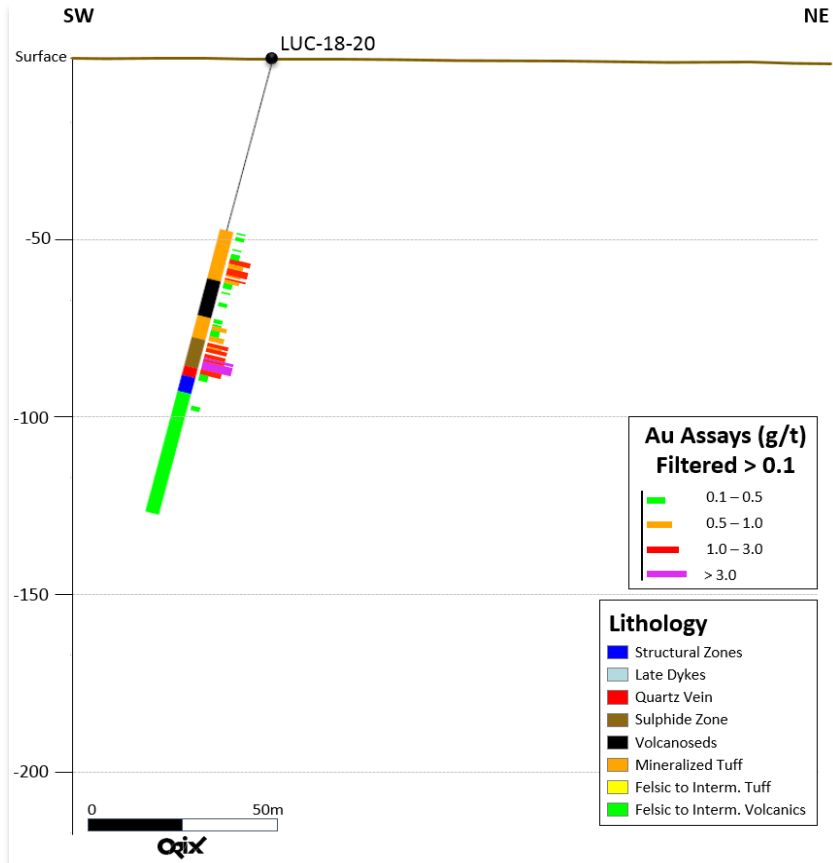


LUCAS GOLD PROJECT LUC 18-19 DRILL HOLE SECTION

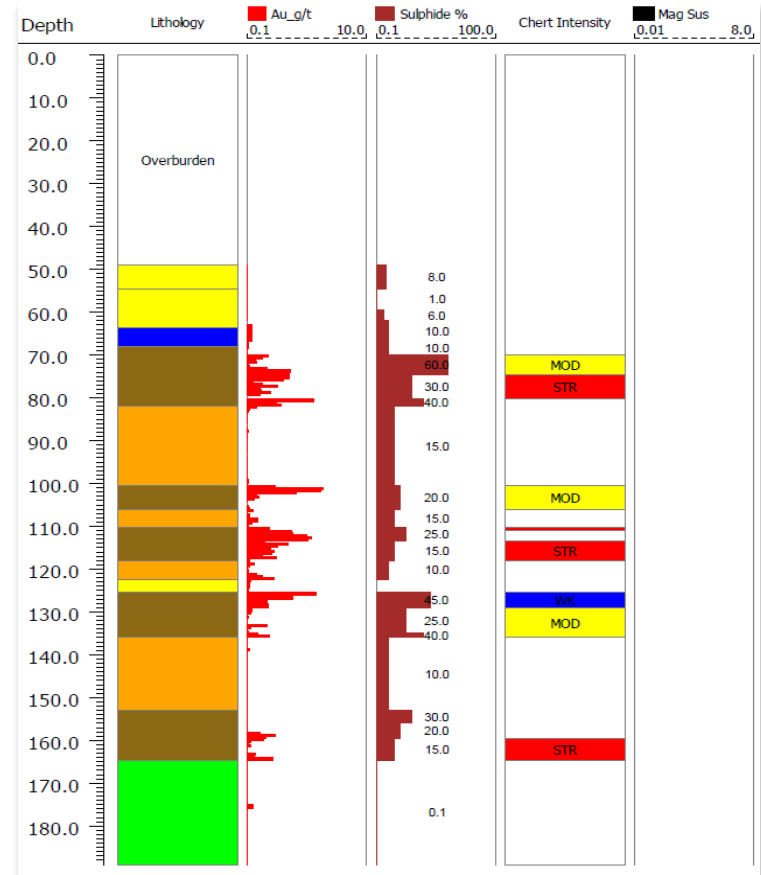
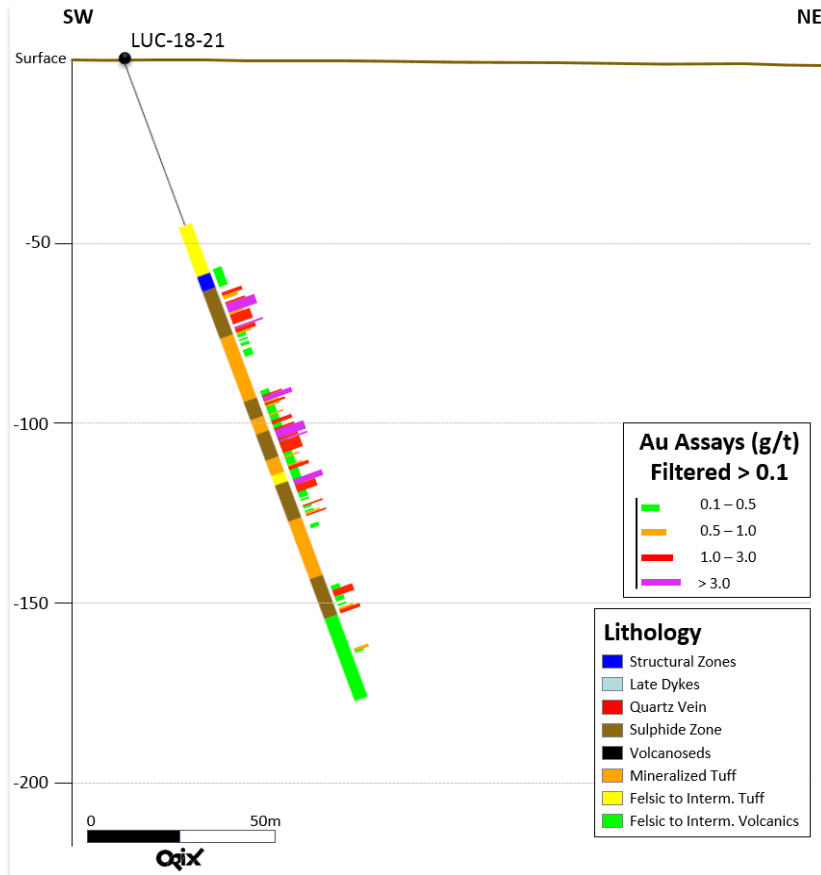


LUCAS GOLD PROJECT

LUC 18-20 DRILL HOLE SECTION

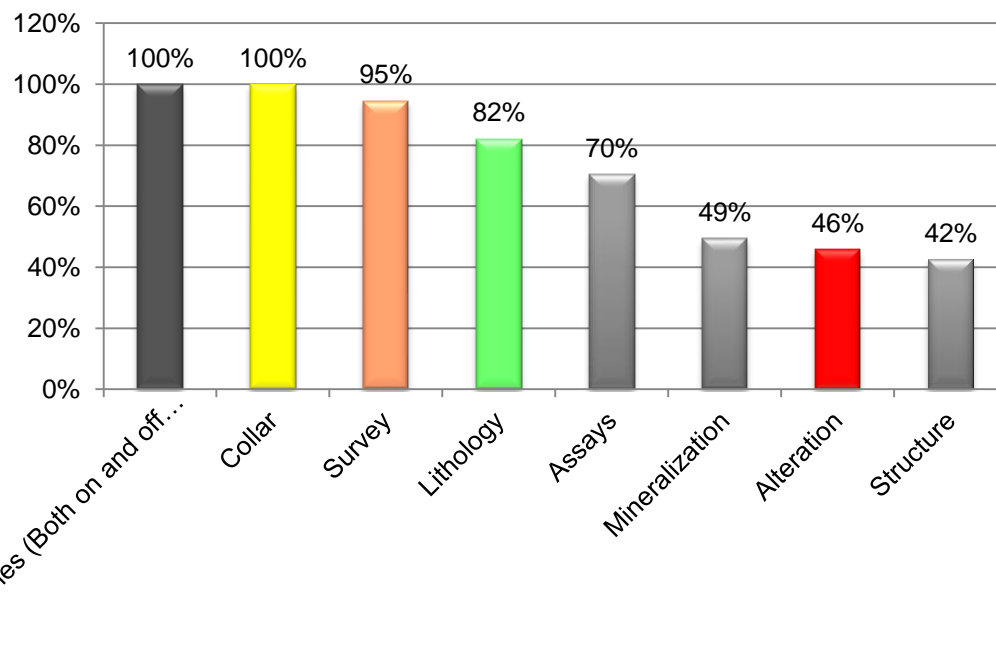


LUCAS GOLD PROJECT LUC 18-21 DRILL HOLE SECTION



DATABASE SUMMARY		
Total Drillholes (Both on and off Property)	273	100%
Diamond Drilling	142	52%
RC Drilling	116	42%
Unknown Drilling Type	15	5%
CONTAINED DATA		
All Drillholes (Both on and off Property)	273	100%
Collar	273	100%
Survey	258	95%
Lithology	224	82%
Assays	192	70%
Mineralization	135	49%
Alteration	125	46%
Structure	116	42%

Lucas Current Database for On and Off Property Drillholes



December 2018



**NOBLE
MINERAL**
EXPLORATION INC.

Drill Ready

Lucas Gold Project

Lucas Township

Management:

**H. Vance White, President & Chief Executive Officer
Randy Singh PGeo(ON), PEng(ON), VP Exploration & Project Development
Corinna de Beer, Corporate Communications**

**2500 – 120 Adelaide St. W
Toronto, Ontario
Canada M5H 1T1**

**Phone: 416-214-2250 | Email: info@noblemineralexploration.com | Fax: 416-367-1954
www.noblemineralexploration.com**

**TSX.V:NOB
FWB:NB7
OTC.PK:NLPXF**